

**China-ASEAN Sea-Rail Multimodal Logistics Project**

**Financed by**

**The Asian Infrastructure Investment Bank**

**Stakeholder Engagement Plan  
(SEP)**

**March 2026**

**Qinzhou Huangma Asset Management Group Co., Ltd.**

**Prepared by : Beijing Zhonghuanruide Environmental Engineering Co., Ltd. &  
Borui Huachuang (Beijing) International Project Management Consulting Co., Ltd.**

## ABBREVIATIONS

AIIB	Asian Infrastructure Investment Bank	HD	House Demolition
DMS	Detailed Measurement Survey	LA	Land Acquisition
E&S	Environmental and Social	LMP	Labor Management Plan
EMDP	Ethnic Minority Development Plan	NELB	New Eurasian Land Bridge
ERAB	Ethnic and Religious Affairs Bureau	NRB	Natural Resources Bureau
ESF	Environmental and Social Framework	NWLSC	New Western Land-Sea Corridor
ESIA	Environmental and Social Impact Assessment	OHS	Occupational Health and Safety
ESMP	Environmental and Social Management Plan	PIE	Project Implementing Entity
ESS1	Environmental and Social Standard 1	PIU	Project Implementation Unit
ESS2	Environmental and Social Standard 2	PMO	Project Management Office
ESS3	Environmental and Social Standard 3	PPM	Project-Affected People's Mechanism
FGD	Focus Group Discussion	PRC	People's Republic of China
FSR	Feasibility Study Report	QDG	Qinbei District Government
GAP	Gender Action Plan	RP	Resettlement Plan
GRM	Grievance Redress Mechanism	SEP	Stakeholder Engagement Plan
GZAR	Guangxi Zhuang Autonomous Region	SSRA	Social Stability Risk Assessment

# Contents

Executive Summary .....	1
1 Project Overview .....	2
1.1 Project Description .....	2
1.2 Project Construction Content .....	2
1.3 Project Construction Area .....	1
1.4 Objective of the SEP .....	2
2 Policies, Laws and Frameworks .....	3
3 Stakeholder Identification and Analysis .....	6
3.1 Primary Stakeholders (Affected Parties) .....	6
3.2 Other Stakeholders .....	8
3.3 Vulnerable Groups .....	13
3.4 Summary of Stakeholders Needs .....	16
4 Completed Stakeholder Engagement Activities .....	22
4.1 Completed Information Disclosure .....	22
4.2 Stakeholder Engagement Activities that Have Been Carried Out .....	30
5 Stakeholder Engagement Plan .....	40
5.1 Purpose and Time .....	40
5.2 Proposed Strategy for Information Disclosure .....	40
5.2.1 The Content of Information Disclosure .....	40
5.2.2 Ways of Information Disclosure .....	46
5.3 Stakeholder engagement plan .....	46
5.3.1 Main content of Stakeholder Consultation .....	47
5.3.2 Main Methods of Stakeholder Consultation .....	47
5.4 Timetable .....	66
5.5 Review of Comments .....	66
5.6 Future Stages of the Project .....	67
6 Grievance Mechanism .....	68
6.1 Grievance Redress Procedure .....	68
6.2 Record and Track on Grievance Feedback and Resolution .....	71
6.3 Grievance Contact Information .....	72
6.4 Project-Affected People's Mechanism (PPM) .....	73
7 Resources and Responsibilities for Implementing Stakeholder Consultation Activities	74
7.1 Resources .....	74
7.2 Roles and Responsibilities .....	74
8 Monitoring and Reporting .....	79
Appendix 1: AIIB Project Leadership Group .....	80
Appendix 2: Public Participation Activities Carried Out .....	82
Appendix 3: Interview Records .....	102

## **Executive Summary**

This Stakeholder Engagement Plan (this plan) is prepared for the China-ASEAN Sea-Rail Multimodal Logistics Project financed by the Asian Infrastructure Investment Bank. It is a dynamic document and will be updated in a timely manner in accordance with the detailed design and implementation of the Project. This Plan is prepared in line with the stakeholder engagement requirements of the Asian Infrastructure Investment Bank's Environmental and Social Framework (ESF), Environmental and Social Standard 1 (ESS1): Environmental and Social Impact Assessment and Management, and Environmental and Social Standard 3: Indigenous Peoples.

This Plan identifies the stakeholders of the Project, distinguishes the key stakeholders during the project preparation stage, and assesses their influence on the Project. On this basis, a consolidated analysis of project stakeholders is provided.

The primary stakeholders of the Project include project-affected persons (PAPs), including 11 Zhuang individuals, subject to land acquisition and involuntary resettlement, residents affected by construction activities within the project construction area (including 60 Zhuang individuals), project construction workers, and staff of the project implementation unit. Other stakeholders of the Project comprise the Project Management Office (PMO), Qinzhou Huangma Asset Management Group Co., Ltd. (PIU), and other relevant functional departments of the Qinbei District People's Government, including key departments such as the Qinbei District Finance Bureau, Bureau of Natural Resources, Health Commission, Human Resources and Social Security Bureau, Women's Federation, Land and Housing Acquisition Center, Civil Affairs Bureau, Ethnic and Religious Affairs Bureau (ERAB), Ecology and Environment Bureau, and Cultural Relics Department. In line with the content and characteristics of the Project, no activities subject to special approval are involved. Relevant government departments only conduct routine management and supervision of the Project within their statutory functions and powers.

Among the main stakeholders, vulnerable groups of the Project are further identified, mainly including low-income groups, the elderly, women, etc. Their main interests and needs are also identified.

Based on the identification and analysis of project stakeholders, corresponding plans have been formulated for project information disclosure (especially information related to environmental and social impacts), stakeholder consultation and feedback mechanisms, as well as Grievance Redress Mechanisms (GRMs) at both project and worker levels. Arrangements are made in this Plan for organizational support, resources, and environmental and social performance monitoring by the PIU.

# 1 Project Overview

## 1.1 Project Description

The China-ASEAN Sea-Rail Multimodal Logistics Project, hereinafter referred to as the “Project”, aims to develop an integrated “Road-Rail-River/Sea” multimodal transfer hub. It will primarily serve two major international corridors: the New Western Land-Sea Corridor (NWLSC) and the New Eurasian Land Bridge (NELB). Upon completion, the Project will effectively enhance regional cargo consolidation, distribution and transshipment capacity, improve multimodal transport efficiency, reduce logistics costs, promote local economic development, and create employment opportunities for countries along the Belt and Road Initiative. According to the Feasibility Study Report of the China-ASEAN Sea-Rail Intermodal Transport Center Project in Qinzhou (October 2025), the Project’s output objectives are as follows:

(1) The Project will promote connectivity in Qinzhou by enhancing regional cargo consolidation, distribution and transshipment capacity and improving multimodal transport efficiency. The forecast annual freight volumes for the target years are 2.1485 million tonnes in 2032, 8.6781 million tonnes in 2042, and 13.3641 million tonnes in 2052. (2) Through the construction of comprehensive demonstration logistics parks and infrastructure works, the Project will form important supply chain nodes and regional logistics hubs for China-ASEAN, improve multimodal transport efficiency and reduce cargo transportation costs. For domestic transport (Chongqing – Qinzhou trunk line, 1,000 km): the railway container transport cost for bulk cargo is 0.45 yuan/tonne-kilometre, heavy truck transport cost is 1.2 yuan/tonne-kilometre, and railway loading and unloading cost is 15.2 yuan/tonne. Road-rail intermodal transport can save approximately 735 yuan per tonne compared with road-only heavy truck transport, and the cost advantage continues to increase with transport distance. For foreign trade transport (Chongqing – Ho Chi Minh City): rail transport for bulk cargo is 30% – 60% faster than sea transport, while sea freight cost is 35% – 50% lower than rail transport. For transit transport (the five Central Asian countries to ASEAN countries): the overall benefits of sea-rail intermodal transport for bulk cargo are superior to traditional routes, with transport efficiency improved by more than 30%. (3) By installing distributed photovoltaic power generation systems on building rooftops, the Project will support the “Dual Carbon” goals of peak carbon emissions and carbon neutrality, with a total installed rooftop solar capacity of 17.7 MW.

## 1.2 Project Construction Content

The construction content of the project includes four subprojects, namely: (1) Logistics and production facilities; (2) Intermodal freight yard; (3) Supporting infrastructure; (4) Capacity building. Detailed information is shown in Table 1-1.

**Table 1-1 Project Construction Content**

No.	Sub-project Name	Construction Content
1	Logistics and Production Facilities	<p>(1) Cross-border E-commerce Logistics and Storage Center, (2) Agricultural Materials Logistics and Storage Center, (3) Trade and Logistics Center, (4) Cross-border Cold Chain Logistics Center, (5) Logistics Industry Center, (6) Smart Logistics Service Center, (7) e-commerce live-streaming base, (8) Comprehensive Storage Center, (9) Freight Yard, (10) 17.7 MW Rooftop Distributed Photovoltaic Power Generation System, Smart Logistics Information Management Platform, etc. Planned site area: ~606.13mu. Total floor area: 309,997.38 m<sup>2</sup>. Total building footprint: 95,860.145m<sup>2</sup>. Cross-border E-commerce Logistics and Storage Center (40,841m<sup>2</sup>), Agricultural Materials Logistics and Storage Center (48,650.12m<sup>2</sup>), Trade and Logistics Center (43,029.5m<sup>2</sup>), Cross-border Cold Chain Logistics Center (77,039.76m<sup>2</sup>), Logistics Industry Center (20,420.5m<sup>2</sup>), Comprehensive Storage Center (17,294m<sup>2</sup>), Smart Logistics Service Center (19,291.33 m<sup>2</sup>), e-commerce live-streaming base (19,291.33m<sup>2</sup>). Supporting facilities: Underground equipment rooms, civil air defense facilities, garage (9,869.84 m<sup>2</sup>).</p>
2	Intermodal Freight Yard	<p>Dedicated rail line and loading/unloading operation yard. The intermodal freight yard covers an area of approximately 259.86 mu, with a total floor area of 13,910 m<sup>2</sup> and a building footprint area of 13,020 m<sup>2</sup>. The dedicated rail line branches from the northern shunting lead of Mahuang Station, turns southeast to form the railway operation yard, which is arranged parallel to the Mahuang Station yard. The main line length is 1.581 km. The loading/unloading yard comprises a container handling area and a breakbulk cargo handling area. The container handling area is equipped with one gantry crane track (with 2 lines) utilizing a 35m span gantry crane; the effective loading/unloading length for each line is 780m, meeting full-train handling conditions. Initially, one loading/unloading track with an effective length of 400m will be implemented, meeting half-train handling conditions. A platform and a warehouse (400m long × 30m wide) are provided on the left side of the track, with the warehouse located on the platform. Auxiliary container areas, including unpacking/packing area, container stacking area, empty container area, intermodal container area, and refrigerated container area, are set up south of the warehouse.</p>
3	Supporting Infrastructure	<p>Supporting Infrastructure includes: the entrance trunk road, the park road network, and the supporting pipeline network. The entrance trunk road connects the park to the external road network. The total route length is 9.754 km, starting near Hengling Village on S313 and ending at G325. The Entrance Trunk Road is implemented in two sections: a highway section and a municipal road section. The highway section is 4.531 km long, built to Class I highway standards with a design speed of 60 km/h and a roadbed width of 24.5 m. The municipal road section is 5.223 km long, built to urban arterial road standards with a design speed of 60 km/h and a red line width of 36 m.</p> <p>The park road network and supporting pipeline network connect the plots to the Entrance Trunk Road and to the park's associated facilities, including water supply, drainage, electrical (power and lighting), gas, and communication systems. The total length of the park road network is 5.402 km, with a red line width ranging from 12 m to 36 m.</p>

4	Capacity Building	Capacity building includes thematic research and training, project management, and consulting services. (1) Thematic research and training includes: the project plans to sign targeted training agreements with universities or research institutions, whereby these institutions will provide technical training on implementation technology and management for logistics enterprises, to enhance the logistics management capabilities of the project implementation agency and other relevant unit managers; in response to the practical issue of the gap between China's logistics costs and international logistics costs, initiate thematic research on reducing sea-rail intermodal logistics costs in the Pan-Beibu Gulf Economic Zone. (2) Project management and consulting services.
---	-------------------	--

Data source: Project FSR, October 2025.

### 1.3 Project Construction Area

The Project is located within Qinbei District, Qinzhou City. As the core of Qinzhou's railway logistics network, the Project site is adjacent to Mahuang Marshalling Yard to the west. The schematic diagram of the Project's location is shown in Figure 1-1.

The project's area of influence covers 2 townships/sub-districts (Changtian Sub-district and Dadong Town), encompassing 5 villages/communities (Huangma Community, Chengbei Community, Longwan Community, Hengling Village, and Jiangbiao Community). The affected villages/communities within the project's zone of impact are shown in Figure 1-2.

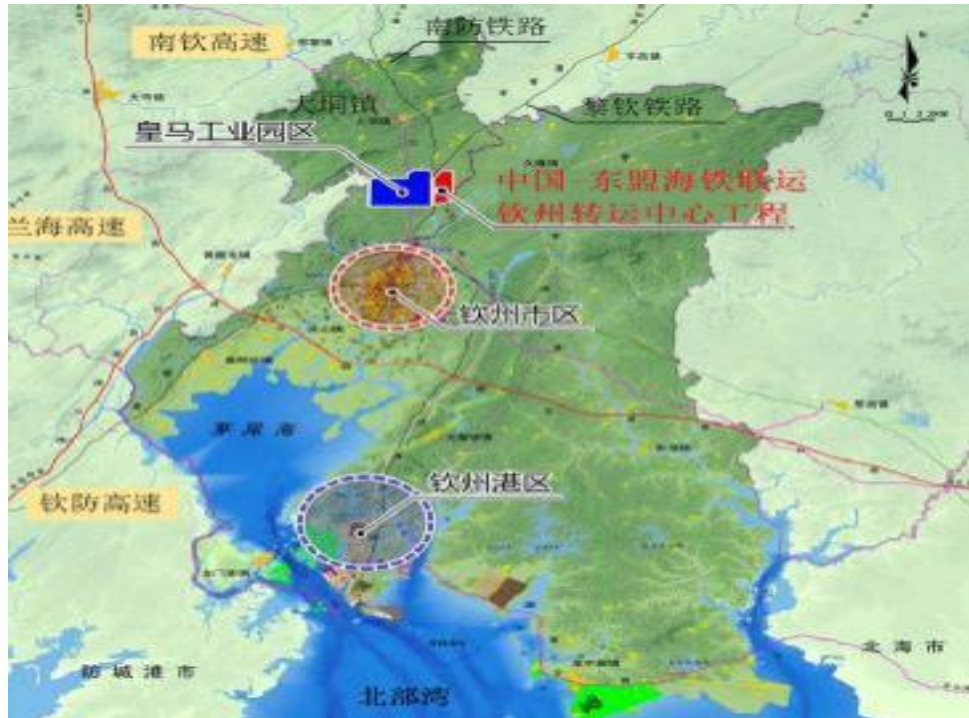


Figure 1-1 Schematic diagram of project area location

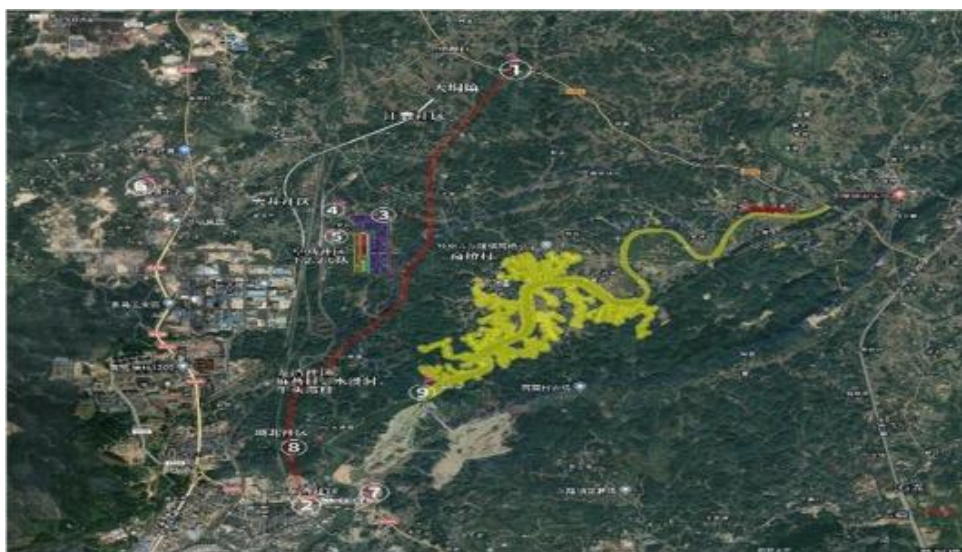


Figure1-2 The geographical location of the affected streets and villages

## 1.4 Objective of the SEP

According to the requirements of the Asian Infrastructure Investment Bank's Environmental and Social Framework (ESF) and Environmental and Social Standard 1 (ESS1): Environmental and Social Impact Assessment and Management, the project is classified as an Environmental and Social Category A project. Based on the requirements of AIIB investment projects for public consultation and information disclosure, as well as stakeholder engagement plans, stakeholder participation must be an inclusive process throughout the project lifecycle. The main objectives of stakeholder engagement include (but are not limited to):

- To disclose project information, including its objectives, scope, potential E&S impacts, and mitigation and management measures, to all stakeholders in a timely, accurate, and comprehensive manner. This ensures the public is fully informed about the project's E&S risks, benefits, and management arrangements, thereby fostering project transparency and public trust.
- Identify stakeholders involved in the project, including project-affected parties (especially vulnerable groups), and key government agencies, individuals and groups having substantial influence on the Project, and analyze the Project's impacts on them and their influence on the Project.
- Identify the Project's environmental and social (E&S) risks and impacts based on stakeholder engagement carried out during project preparation by PMO, PIU and E&S Consultants, and analyze stakeholders' concerns in project land use, labor management, occupational health and safety (OHS), traffic safety, etc.,
- In the project preparation stage, provide ideas and information for project design optimization from
  - a social perspective through the coordination among E&S Consultants and feasibility study institutions.
- Based on feedback from various stakeholders regarding the project's potential E&S impacts and mitigation measures, optimize and refine the project's Environmental and Social Management Plan (ESMP) and Grievance Redress Mechanism (GRM), clarify the responsibilities of relevant entities, and provide safeguards for the smooth implementation and operation of the project.
- Through the formulation and implementation of the SEP, further integrate information disclosure and stakeholder engagement requirements of different government agencies concerned, and establish an intersectoral interaction mechanism. Identify more suitable entry points for complying with the AIIB ESF, expand the depth and breadth of information disclosure and stakeholder engagement, further develop relevant measures.
- Establish GRM at both the project level and worker level to ensure that complaints and feedback from the public and workers can be addressed in a timely, transparent, and appropriate manner. During the grievance handling process, the privacy and personal safety of complainants must be strictly protected, and members of the grievance handling team must be safeguarded from bias, pressure, or retaliation.
- Throughout the project implementation process, a tracking and monitoring mechanism for the SEP shall be established to regularly evaluate the effectiveness of public participation, information disclosure, and grievance handling. Based on monitoring results and actual conditions, arrangements for information disclosure, public consultation, and GRM shall be dynamically adjusted to ensure continuous

improvement and effective implementation of project management.

## **2 Policies, Laws and Frameworks**

The preparation of this SEP is in accordance with the current applicable E&S laws and regulations of the PRC, local and departmental rules and regulations of Guangxi Zhuang Autonomous Region (GZAR) and Qinzhou City, as well as the requirements of the AIIB's "Environmental and Social Framework (ESF)" (revised in 2024).

According to AIIB's ESF document, clear requirements have been put forward for stakeholder participation. Therefore, it is a key standard for guiding participation activities such as information disclosure and public consultation throughout the entire project cycle. ESF specifies the main elements of stakeholder participation:

- Communicate with stakeholders continuously in the project life cycle and start early;
- Prepare and implement an SEP, which describes the timing, scope and methods of engagement in the project lifecycle;
- Disclose project information, so that stakeholders learn the Project's risks and impacts, and potential opportunities.
- Conduct meaningful consultation with all stakeholders in a culturally appropriate manner, and provide them with timely, relevant, understandable and accessible information, so that they are free from manipulation, interference, intimidation and discrimination.
- Keep records of stakeholder engagement, including a brief description, an abstract of feedback, and the reason for giving or not giving feedback; and establish and implement a GRM to address and solve grievances.

### **Analysis of Differences between PRC Laws & Regulations and AIIB Environmental and Social Standards (ESSs)**

In general, China has formulated relevant regulations and policies to communicate with different stakeholders by theme, and relevant work is done by competent authorities. The laws and regulations of China raise requirements for Social Stability Risk Assessment (SSRA), EIA, LAR process, etc. for stakeholder engagement in construction projects, including fully covering all stakeholders, collecting their comments, and involving them in the LAR impact survey result verification. To improve transparency, government agencies and project owners should disclose project information as much as possible.

In terms of project implementation, China's policies on information disclosure and stakeholder engagement have some gaps from ESF, mainly including:

- China's policies do not require the preparation and implementation of an SEP. China's policies require that information disclosure and public participation in construction projects be conducted by theme, and there is no systematic planning and no effective communication mechanism between agencies concerned, so that information is not fully shared and integrated, and stakeholder engagement is ineffective.
- Not all construction projects are mandated to conduct public participation and information disclosure activities. For example, public participation in EIA is required for special plans involving public environmental rights and construction projects requiring an EIA report only, and not required for construction projects requiring an EIA report form or registration form only; only enterprises with great environmental

impacts and public attention are required to disclose corporate environmental information.

- Domestic projects focus on pre-approval public participation, yet somewhat neglect stakeholder engagement during the construction and operation phases. For some construction projects, public participation is a prerequisite for government approvals (e.g., approvals of feasibility study, EIA and LA), so construction agencies attach importance to such early stage participation, but there is no requirements or arrangements for dedicated organizations and funding for stakeholder engagement and grievance redress during the construction phase.

- In general, domestic modes of information disclosure and stakeholder engagement mainly include questionnaire surveys and public hearings. For example, the Measures for Public Participation in Environmental Impact Assessment require that information disclosure shall be conducted at least by the internet, newspapers and posting, while TV and other new media (WeChat, etc.) are rarely used. In-depth public participation, such as public meetings, hearings and expert discussion meetings, is required only for construction projects with many public doubts and objections on environmental impacts. In the process of EIA and SSRA, the public participation is mostly through questionnaire surveys rather than focus group discussions (FGDs), interviews, etc., and there is limited two-way feedback mechanism. As a result, conflicts arising from inadequate stakeholder engagement may delay the project implementation.

During the preparation and implementation of the project, information disclosure and stakeholder engagement activities shall be carried out in accordance with the requirements of the AIB's ESF and its Environmental and Social Standards. To ensure the systematic and effective public participation process of the project, E&S consultants analyzed the similarities and differences between domestic laws and the ESF regarding stakeholder engagement requirements. Combining the project's content, characteristics, and potential E&S impacts and risks, they identified and defined the entry points for stakeholder engagement and the forms of participation suitable for the project's impacts and local social context, thereby comprehensively deepening the content of stakeholder involvement.

The project will integrate the requirements of different domestic government departments concerning information disclosure and public participation, fully utilize the project's organizational structure, and establish interaction and linkage mechanisms between different departments and agencies. Building upon the ESF requirements for "meaningful consultation" and information disclosure, the project will further expand the breadth and depth of information disclosure and public participation, with special attention given to vulnerable groups. Simultaneously, GRMs will be established at the project and worker levels, along with a monitoring mechanism for stakeholder engagement throughout the project, to enhance social acceptability and project sustainability. For this purpose, the project has prepared an SEP report.

During the ESIA preparation phase, the project identified and managed key stakeholders, continuously disclosed project information, collected and responded to their concerns, and incorporated reasonable feedback into the project design and E&S management measures to mitigate E&S risks. The SEP specifies the arrangements, functions, and responsibilities for information disclosure and public consultation at various project stages. By strengthening the organization and coordination of the PMO and PIUs, it guides information disclosure and public participation at different stages, while coordinating with relevant entities such as the

ESIA team and feasibility study units to form a collaborative feedback mechanism, ensuring that concerns and opinions from all parties are fully communicated, reasonably addressed, and effectively implemented.

The project has prepared a SEP Report, including: identification and analysis of stakeholders; information disclosure and public consultation activities already conducted; stakeholder opinions and feedback; a detailed SEP; resources and responsibilities; information disclosure; GRM; and a monitoring and reporting system. The SEP is a dynamic document that will be updated as needed based on the project's detailed design and implementation. If substantial changes occur in the project's scope, engagement methods, or disclosure of major issues, the SEP will be revised accordingly, and disclosure and consultation activities will be re-conducted to ensure the public's continued right to know and participate.

During the preparation of the E&S documents, the E&S consultants maintained full communication with the Qinbei District Government, PMO, PIUs, and relevant functional departments to confirm the identified risks, impacts, and countermeasures, ensuring that the recommendations are practical and actionable for the project.

According to AIIB's timeline for reviewing E&S documents, the PMO has defined the schedule for document preparation and disclosure: it is planned to submit the revised Chinese and English versions by 2<sup>nd</sup> week of February 2026. Upon finalization of the Chinese version, public disclosure will commence: offline disclosure will involve posting notices in townships and communities affected by the project and establishing document viewing points; online disclosure will be carried out simultaneously through the Qinbei District Government portal and the official WeChat account of Huangma. The documents to be disclosed include the **ESIA, SEP, RP, and ESMP**.

According to the requirements of the AIIB, the PMO needs to establish a Grievance Redress Mechanism (GRM) to receive, evaluate and resolve the project-affected people's concerns, complaints and dissatisfaction with the borrower/client's social and environmental performance in the project. The GRM is important for development projects that have ongoing or anticipated adverse impacts or risks. Establishing the project's GRM will clarify the channels, procedures, and contact persons, focusing on addressing existing or potential adverse impacts. It also includes information about AIIB's PPM, explaining how project-affected people can access and use it to seek further recourse beyond the project level. All information regarding the PPM's channels and access methods will be included in the project's E&S documents and widely disseminated to the public through the GRM's information disclosure and outreach activities.

#### **AIIB Project-Affected People's Mechanism (PPM)**

The PPM provides an opportunity for an independent and impartial review of submissions from Project-affected People (PAPs) who believe they have been or are likely to be adversely affected by AIIB's failure to implement its Environmental and Social Policy (ESP), and whose concerns cannot be addressed satisfactorily through Project-level Grievance Redress Mechanism (GRM) or AIIB Management's processes. Relevant information on the PPM is available at the following link: <https://www.aiib.org/en/about-aiib/who-we-are/project-affected-peoples-mechanism/how-we-assist-you/index.html>

### 3 Stakeholder Identification and Analysis

Stakeholders refer to individuals or groups who can influence or benefit from the achievement of project goals.

Based on the requirements of ESF and ESS, construction content, on-site investigation results, and interviews with relevant institutions of the Project, the stakeholders identified are primarily categorized into 3 groups: primary stakeholders (affected parties), other stakeholders, and vulnerable groups. Primary stakeholders (affected parties) are individuals or groups affected or potentially affected by the Project, including those directly affected individuals, indirectly affected individuals, and groups negatively impacted by project construction.

- Other stakeholders: Individuals, groups, or organizations that may have an interest or stake in the project.
- Vulnerable groups refer to those who may be more likely to be adversely affected by the project impacts and/or more limited than others in Their ability to take advantage of a project's benefits. Such an individual/group is also more likely to be excluded from/unable to participate fully in the mainstream consultation process and as such may require specific measures and/or assistance to do so.
- During the stakeholder identification process, the project focuses on analyzing the primary project-affected people/groups and institutions/departments with significant influence over the project (particularly those involved in critical approvals), to better guide project preparation, design, implementation, and operation. This stakeholder identification encompasses all relevant parties during both the construction and operation phases of the project activities. The identification results provide a critical foundation for the subsequent implementation of public participation, information disclosure, and grievance mechanisms.

#### 3.1 Primary Stakeholders (Affected Parties)

The primary stakeholders of the Project include directly benefiting residents within the project's area of influence, groups adversely affected by the project construction, and project workers. For detailed identification and analysis, refer to Table 3-2 below.

**Table 3-1 Identification and Analysis of Key Stakeholders**

Cat.	Key Stakeholders	Impact on the Stakeholders	Influence over the Project
<b>Direct Beneficiaries</b>	The project's scope covers Dadong Town and Changtian Subdistrict, benefiting approximately 118,100 residents. This includes about 53,100 women (45.1%) and 60 ethnic minorities (Zhuang), accounting for 0.05%.	Benefits include improved transportation and regional economic development from the construction of logistics and production facilities, the entrance trunk road, and the multimodal freight yard, leading to increased employment and income opportunities.	Their understanding and support are fundamental for the smooth progress of project construction and operation. Improper handling may trigger social conflicts and disputes.
<b>Adversely Affected Groups</b>	<b>Persons Affected by LA and HD:</b> Affecting 5 villages/communities (Huangma Community, Chengbei Community, Longwan Community, Hengling Village, Jiangbiao Community) in Changtian Subdistrict and Dadong Town.	The project will permanently acquire 1,705.75 mu of land, including 1,641.40 mu of collective land and 64.35 mu of state-owned land. The demolition area of rural residential houses is 32,625 m <sup>2</sup> . Their daily lives	The successful implementation of land acquisition and demolition is a prerequisite for project commencement. If project-affected people raise disputes, it may force project site

	<p>A total of 691 households (3,459 individuals) are affected, including 11 ethnic minority individuals (0.3%). Specifically, 657 households (3,320 persons) are affected by land acquisition, 107 households (550 persons) by house demolition, including 73 households (441 persons) affected by both.</p>	<p>and production activities will be directly affected. Additionally, project construction will affect surface attachments, crops/seedlings, scattered trees, temporary sheds, 600 graves, and a Tudimiao in Laoba Village, Hengling Village. All temporary land use will be confined to the project's red line boundary, with no additional temporary land occupation required.</p>	<p>adjustments or changes, directly impacting the project schedule and costs. The demands and reactions of these adversely affected groups require proper handling and attention.</p>
	<p>Residents near E&amp;S Sensitive Points during Construction and Operation: Residents within a 200m corridor: Affecting 6 natural villages (Hengling Village, Laoba Village, Qingtang Village, Maqiong Village, Shuijindong Village), 1 residential compound (Hanlin Junfu), and 1 kindergarten (Hanlin Zunfu Kindergarten), with a total population of 1,865.</p> <p>Residents along the dedicated railway line: 21 households in Laoba Village (Hengling Village) within 60m of the main line are affected by noise, and 9 households by vibration.</p> <p>Potential affected populations: 5 schools and surrounding villages within a 5km radius of the planned waste transfer station, totaling approximately 37,268 people.</p>	<p><b>During Construction:</b> Construction activities (e.g., earthworks, transportation, machinery) may cause dust, noise, vibration, solid waste, traffic safety issues, and potential infectious disease transmission risks from the influx of laborers, adversely affecting communities and schools along the route.</p> <p><b>During Operation:</b> Noise, vibration, and traffic safety impacts from project vehicles and train operations. The waste transfer station may cause odor and sanitation issues. Furthermore, according to the updated FSR (Oct 2025) design, no underground pipelines have been identified along the route, thus avoiding risks of utility disruptions during potential pipeline relocation or excavation.</p>	<p>The understanding and support of residents and public institutions like schools along the route are crucial for smooth project construction and operation. Inadequate information disclosure, communication, or insufficient E&amp;S mitigation and management measures may trigger social conflicts and complaints. Effective mitigation measures should be implemented through the ESMP, with ongoing communication and feedback via the SEP.</p>
<p>Project workers</p>	<p><b>Direct Workers:</b> Staff directly employed by the PMO and PIU, specifically working on the project or its activities; management and maintenance personnel during operation.</p> <p><b>Contractor Workers:</b> Laborers employed and provided by third parties (contractors or subcontractors), mainly engaged in direct or auxiliary civil works and related construction. According to the updated FSR (Oct 2025), an estimated 1,309 contractor workers will be used, including 924 skilled and 385 unskilled workers.</p> <p><b>Supplier's Workers:</b> Workers employed by agents or manufacturers supplying</p>	<p>As direct participants, project workers may be affected in terms of employment conditions, working conditions, protection of labor rights, OHS - including infectious disease transmission, and road traffic safety risks.</p>	<p>As key participants, proper management, training, and safety protection of workers are crucial to the project's success. Non-standard worker management or inadequate safety measures will directly impact project quality and schedule and may cause safety incidents. Employment contracts, rights protection, OHS training, and grievance mechanisms must be specified in the ESMP.</p>

	goods and equipment (e.g., for PV equipment installation).		
--	--	--	--

Data source: E&S Investigation Team

**3.2 Other Stakeholders**

Other stakeholders involved in the Project include: (1) Project Management and Implementation Agencies (e.g., the Qinbei District Leading Group, PMO, Qinzhou Huangma Asset Management Group Co., Ltd.); (2) Relevant Government Functional Departments (e.g., Qinbei District NRB, Bureau of Ecology and Environment, Land and Housing Expropriation Center, Railway Authorities, Bureau of Human Resources and Social Security, Transport Administration, Women's Federation, etc.); (3) Grassroots Administrative Units (e.g., Changtian Subdistrict Office and Dadong Town People's Government); (4) Other Relevant Third Parties: Contractors, design and consulting institutions, the ESIA preparation unit, the RP preparation unit, and supervision entities.

The specific identification and analysis of other stakeholders are detailed in Table 3-2.

**Table 3-2 Identification and Analysis of Other Stakeholders**

Other Stakeholders		Impact on the project
Qinbei District Leadership Group;		<ul style="list-style-type: none"> <li>Coordinate the implementation of the project, coordinate the implementation of relevant pre procedures, and strengthen policy coordination with relevant provincial departments</li> </ul>
Qinzhou Development and Reform Bureau and Qinbei District Development and Reform Bureau (PMO);		<ul style="list-style-type: none"> <li>Make overall decisions for project implementation, mainly including coordinating with relevant government departments, integrating institutions, responsible for project budget and operating expense arrangements, etc;</li> <li>Overall project management and supervision, promoting coordination among various institutions such as social evaluation, environmental impact assessment, and design, as well as among relevant provincial government departments;</li> <li>Strengthen procurement management to ensure that relevant E&amp;S requirements are included in the bidding documents;</li> <li>Coordinate the provision of relevant E&amp;S training, report project progress and E&amp;S implementation to the AIIB and project steering committee, and coordinate the cost of stakeholder participation.</li> </ul>
Qinzhou Huangma Asset Management Group Co., Ltd. (PIU);		<ul style="list-style-type: none"> <li>Promoting project preparation and implementation, as well as providing guidance and supervision;</li> <li>Coordinate the establishment of relevant institutions and budget implementation of E&amp;S mitigation measures, coordinate and arrange information disclosure, public consultation, and appeal handling;</li> <li>Responsible for the construction of all project content;</li> <li>Implement E&amp;S requirements in the bidding documents and manage contract workers;</li> <li>Coordinate the implementation of ESMP and environmental and social management plan;</li> <li>Responsible for project operation or seeking partners.</li> </ul>
Government related functional departments	Qinbei District Finance Bureau	<ul style="list-style-type: none"> <li>Responsible for project loan transfer related matters and providing financial budget for project supporting funds (including land acquisition and demolition costs, etc.).</li> </ul>
	Natural Resources Bureau	<ul style="list-style-type: none"> <li>Responsible for land acquisition acceptance, review, and filing for approval;</li> <li>Responsible for implementing land security for project construction;</li> <li>Apply to the government for the issuance of a land acquisition pre announcement based on the application materials submitted by the project owner.</li> </ul>

		<ul style="list-style-type: none"> <li>• Calculate the compensation standards for land acquisition in accordance with the law;</li> <li>• Issuance of construction land permit.</li> </ul>
	Acquisition Center	<ul style="list-style-type: none"> <li>• Based on the overall plan and requirements of the project, combined with local land use policies, urban planning, and laws and regulations, scientifically and reasonably formulate the expropriation plan. This includes determining the scope of expropriation, target land parcels, expropriation schedule, and expected goals.</li> <li>• Responsible for ensuring that the entire process of land acquisition strictly complies with national and local laws, regulations, and policy requirements related to land acquisition, demolition compensation, etc.</li> <li>• Conduct a detailed investigation and registration of the land, buildings, and other attachments within the proposed expropriation scope, including ownership confirmation, area measurement, value evaluation, etc., to provide a basis for subsequent expropriation work.</li> <li>• Organize professional evaluation agencies to assess the value of assets such as land and houses within the scope of expropriation, providing a basis for formulating reasonable compensation plans.</li> <li>• After the completion of the expropriation assessment, negotiate with the expropriated party to determine the compensation plan and sign the expropriation compensation agreement. Subsequently, assist the expropriated person in completing the relocation work.</li> <li>• Supervise the entire collection process to ensure that all work is carried out in accordance with laws and regulations. At the same time, responsible for handling various disputes and complaints that arise during the expropriation process.</li> </ul>
	China Railway Nanning Group Co., Ltd.	<ul style="list-style-type: none"> <li>• The authority responsible for the approval and review of the project's dedicated railway line; it oversees the technical review, approval, and full-process supervision of the railway connection plan.</li> <li>• Participates in the design review, construction guidance, and operational management of the railway project, ensuring compliance with national railway network planning and safety standards.</li> <li>• Coordinates the approval processes, construction, safety management, transportation organization, and final acceptance of railway-related works, guaranteeing both railway transport safety and smooth project integration.</li> <li>• Supports the development and operation of the sea-rail multimodal transport system by providing planning, capacity, and technical assistance.</li> </ul>
	Guangxi Coastal Railway Co., Ltd.	<ul style="list-style-type: none"> <li>• Responsible for the operation and maintenance of the Nanfang Line and Mahuang Marshalling Station, providing essential railway operation and management support for the project.</li> <li>• Undertakes the functions of organizing operations, dispatching, and safety management for the dedicated railway line.</li> </ul>

		<ul style="list-style-type: none"> <li>Facilitates interface construction, joint commissioning and testing during the dedicated line's build phase, and assumes responsibility for its post-construction operation.</li> <li>Participates in technical coordination, equipment maintenance, and safety supervision related to the project's railway components.</li> </ul>
	Nanfeng Line Mahuang Station (Connection Station)	<ul style="list-style-type: none"> <li>Handles the loading/unloading of project materials, train marshalling, and dispatching operations.</li> <li>Manages the technical interfaces, construction linkages, and joint safety inspections for the connection with the project's dedicated railway line.</li> <li>Upon project completion, will provide loading/unloading and marshalling services for freight moving to/from Qinzhou Port, serving as a critical node in the sea-rail multimodal logistics chain.</li> <li>Supports China Railway Nanning Group and Guangxi Coastal Railway Co. in operational management and safety oversight.</li> </ul>
	Ecological Environment Bureau	<ul style="list-style-type: none"> <li>Environmental protection and supervision management work.</li> <li>Acceptance, review, and approval of domestic environmental impact assessments</li> </ul>
	Cultural Relics Department	<ul style="list-style-type: none"> <li>The protection, management, research, and utilization of cultural heritage.</li> </ul>
	Civil Affairs Bureau	<ul style="list-style-type: none"> <li>Implement subsidy standards and supporting policies for social assistance targeting low-income groups, such as those eligible for subsistence allowances and persons with disabilities.</li> </ul>
	Women's Federation	<ul style="list-style-type: none"> <li>Protect the rights and interests of women and children.</li> </ul>
	Ethnic and Religious Affairs Bureau	<ul style="list-style-type: none"> <li>Identify villages with concentrated EM populations in the project area and assist the implementing agency in carrying out corresponding activities.</li> </ul>
	Street offices/township governments	<ul style="list-style-type: none"> <li>Coordinate and resolve village/community project land use, handle appeals and complaints, etc;</li> </ul>
	Community residents/village committees	<ul style="list-style-type: none"> <li>Propose to expropriate land ownership entities, sign village level land acquisition agreements, and organize villagers to confirm the impact of land acquisition and ground attachments;</li> </ul>

	<ul style="list-style-type: none"> <li>Responsible for coordinating and organizing village meetings, assisting in conducting consultation and participation activities for villagers.</li> </ul>
Contractors and main suppliers	<ul style="list-style-type: none"> <li>Execute project construction activities, and the supply and installation of related equipment and materials, ensuring all work complies with contractual and technical specification requirements.</li> <li>Implement corresponding mitigation measures for labor management, OHS, and other areas as required by the PIU and in accordance with the approved ESMP.</li> <li>Establish and operate a GRM to properly address complaints or concerns from workers and residents of surrounding villages/communities during the construction phase.</li> </ul>
The unit responsible for preparing the social and environmental impact assessment report	<ul style="list-style-type: none"> <li>Prepare the SEP based on the project's characteristics and the FSR.</li> <li>Identify potential environmental and social risks and impacts stemming from project activities, and formulate the corresponding ESMP to ensure compliance with relevant AIIB Environmental and Social Standards.</li> <li>With assistance from the PMO, organize and implement stakeholder engagement activities to gather their feedback, concerns, opinions, and suggestions. The results are fed back to the PIU and relevant authorities for subsequent project design refinement and management optimization.</li> </ul>
Project design unit	<ul style="list-style-type: none"> <li>Be responsible for the project's design work.</li> <li>Refine the project design by integrating the recommendations from the E&amp;S assessments and considering the needs of the various stakeholders.</li> </ul>

Data source: E&S Investigation Team (Updated in 2026.02)

### **3.3 Vulnerable Groups**

The identified vulnerable groups primarily include the elderly, women, children, low-income populations, and ethnic minorities. These groups are often more susceptible to project-related impacts, such as land acquisition, construction, and operational risks like dust, noise, vibration, traffic hazards, and disease transmission, due to relative disadvantages in economic status, physical capacity, access to information, and social participation. They are also less likely to engage in public consultations, leading to potential marginalization in project design and decision-making. Their opinions and needs may go unheard, resulting in exclusion from project benefits. Therefore, the project must pay special attention to their rights and interests by implementing measures to mitigate adverse impacts and ensure fair treatment in benefit distribution. Additionally, providing job opportunities and skills training will help improve their livelihoods and enhance the project's inclusiveness and sustainability. Please refer to the table below for details.

**Table 3-3 Identification and analysis of vulnerable groups**

Stakeholder Category	Identification	Impact on the Stakeholder	Influence over the Project
The elderly	Mainly elderly individuals from households affected by land acquisition/house demolition, and elderly residents within 200m of the project corridor or near sensitive sites (e.g., 6 natural villages, Hanlin Zunfu residential area). Includes elderly in 21 noise-affected and 9 vibration-affected households within 60m of the dedicated railway line in Laoba Village (none have heart conditions), and those in villages/communities within 5km of the waste transfer station.	<ul style="list-style-type: none"> <li>• More sensitive to noise, vibration, and dust due to declining physical health.</li> <li>• Face increased traffic safety risks.</li> <li>• Have limited access to information and are easily overlooked in public participation.</li> <li>• May experience temporary disruption to daily life if relocated.</li> </ul>	Their direct influence on project decisions is relatively low. However, addressing their legitimate concerns is crucial to prevent resident dissatisfaction and complaints, warranting specific attention.
Children	Primarily children at sensitive locations: students of Hanlin Zunfu Kindergarten and the 5 schools within 5km of the waste transfer station.	<ul style="list-style-type: none"> <li>• More vulnerable to environmental factors like air quality, noise, vibration, and infectious diseases.</li> <li>• Face increased traffic safety risks due to higher traffic volumes during school hours.</li> </ul>	Their influence on project participation and decision-making is low. However, their health and safety are of high concern to families and society, necessitating protective measures.
Women	The project area has approximately 53,100 women (45.1% of the local population). Among the people affected by the LA and HD, the female population is about 1,694, representing 48.97%; Women will also be involved during the construction and operational phase (target proportions: 20% during construction and 30% during operation.).	<ul style="list-style-type: none"> <li>• Often more engaged in agriculture or informal employment while also caring for families, making them more sensitive to impacts of noise, dust, vibration, traffic, and disease on daily life.</li> <li>• Female workers require protection of their rights, including OHS, equal pay, and freedom from gender-based violence.</li> <li>• May participate less in compensation consultations, decision-making, and accessing employment opportunities, leading to their concerns being overlooked.</li> </ul>	Promoting gender equality and inclusion is essential. Their equal rights in information access, compensation/resettlement, and employment must be safeguarded.
Low-income populations	11 low-income households (46 individuals, 1.33% (3,459 individuals) of the project-affected people) are directly affected by permanent land acquisition/demolition. 278 low-income households (693 individuals) reside in the project area.	<ul style="list-style-type: none"> <li>• Livelihoods are vulnerable to LA/HD impacts, with risks of income loss and increased living costs.</li> <li>• Less resilient to environmental, health, and traffic safety issues, with limited recovery capacity.</li> <li>• May struggle to access project-related employment and development opportunities equally.</li> </ul>	A potentially sensitive group requiring focused monitoring and communication. Timely response to their legitimate concerns and protection of their basic livelihoods are necessary.
Ethnic minorities	The permanent LA and HD for the project directly affect 11 ethnic minority individuals, constituting 0.3% of the total affected population (3,459 individuals). Ethnic minority	<ul style="list-style-type: none"> <li>• This group is subject to the same project-induced impacts and risks—including land acquisition and house demolition, environmental factors (dust,</li> </ul>	The project will ensure ethnic minority groups share equally with Han residents in the benefits

	<p>identification revealed a minimal presence within the project area, with no concentrated settlements. Only 60 ethnic minority individuals (all of the Zhuang ethnic group) reside in the area, representing 0.05% of the total local population. These individuals are primarily scattered migrants who relocated through marriage or mobility. According to the key informant interviews and FGDs conducted by the E&amp;S survey team, ethnic minority participants are able to communicate in Mandarin and enjoy the same public services, social welfare benefits, legal rights, and protections as the Han population. Although ethnic minority residents have retained their own cultural customs and lifestyles, this does not affect their access to services or participation in local socioeconomic activities. Within the project area, some characteristics of the Zhuang have been weakened or are less pronounced due to their integration into the broader Han social and economic systems. In accordance with the Constitution of the PRC and the system of regional ethnic autonomy, the Zhuang are explicitly recognized as one of China's ethnic minorities and as an indigenous ethnic group of the GZAR. All Zhuang residents within the project area legally possess this minority status conferred by the Constitution and laws. Consequently, ESS3 has been triggered.</p>	<p>noise, vibration), traffic safety, and potential adverse effects related to risks of disease transmission, as the Han nationalities. They will also have equal access to project benefits such as jobs and development opportunities. No specific or adverse impacts on the ethnic minority population are anticipated.</p>	<p>generated, safeguarding their entitlement to equal rights.</p>
--	---	--	---

### **3.4 Summary of Stakeholders Needs**

Based on the identified level of impact on and influence over the project by different stakeholders, the E&S consultants conducted a social impact assessment using methods such as FGD, key informant interviews, and questionnaire surveys. This process helped to identify the main concerns and needs of various stakeholders regarding multiple aspects across different project phases, including the disclosure of project information, consultation on opinions, participatory engagement, and the protection of rights and interests. Detailed information is shown in Table 3-5.

**Table 3-4 Summaries of stakeholders' interest demands for the project**

Stakeholder		Interest demand
Main stakeholders	Residents of surrounding villages/communities in the project area	<ul style="list-style-type: none"> <li>• If there are new suitable employment opportunities, I hope to be taken care of and do some work within my capabilities;</li> <li>• Participate in training to enhance one's work abilities;</li> <li>• To reduce the impact of construction on residents' travel;</li> <li>• The site selection of the project should be as far away from residential buildings as possible, in order to minimize the impact of noise and vibration on the residential area;</li> <li>• Engineering construction needs to minimize environmental disturbance to surrounding communities, including pollution such as noise, dust, and solid waste;</li> <li>• Regularly disclose relevant construction information and environmental monitoring data to the community;</li> <li>• Transport vehicles should be sealed as tightly as possible to reduce the phenomenon of soil falling, and transportation routes should be optimized as much as possible to minimize the impact on community traffic safety;</li> <li>• Their opinions and suggestions will be solicited and duly responded to during all project phases, including planning, design, construction, and operation.</li> <li>• The project party should establish smooth channels for resident participation and feedback mechanisms to ensure that residents' reasonable demands can be responded to and handled in a timely manner.</li> </ul>
	Residents negatively affected by land acquisition and involuntary resettlement	<ul style="list-style-type: none"> <li>• Land acquisition will not affect my income;</li> <li>• Timely disclosure of compensation policy standards;</li> <li>• Timely and full payment of compensation;</li> <li>• Resettlement housing should be implemented as early as possible;</li> <li>• Employment skills training for affected individuals to increase employment opportunities;</li> <li>• Provide employment opportunities and improve living standards;</li> <li>• Publish channels for appeals and complaints;</li> <li>• To conduct consultations and listen to residents' opinions and suggestions.</li> </ul>
	Ethnic Minorities	<ul style="list-style-type: none"> <li>• Ensure Zhuang residents (including the 11 affected individuals) receive completely equal compensation standards, resettlement arrangements, and livelihood restoration measures as Han residents, along with clear and understandable policy explanations regarding land acquisition compensation, livelihood restoration, and social security.</li> <li>• Guarantee Zhuang residents (including the 11 affected individuals) can participate in culturally appropriate, accessible, gender-sensitive, and inclusive substantive consultations on key issues such as project land acquisition, compensation negotiations, livelihood restoration plans, and construction scheduling, allowing them to fully express their concerns and opinions.</li> <li>• Address impacts from construction noise, dust, and traffic safety on daily life, and ensure reasonable construction scheduling or temporary suspension during traditional Zhuang festivals like "Sanyuesan"<sup>1</sup>, demonstrating respect for ethnic cultural customs.</li> </ul>

<sup>1</sup> The Sanyuesan Festival (Third Day of the Third Lunar Month) is a traditional festival of the Zhuang people and one of the items listed on the National Intangible Cultural Heritage Inventory.

		<ul style="list-style-type: none"> <li>• Provide priority access to local employment and free vocational skills training opportunities under equal conditions during project construction and operation, particularly offering suitable non-technical positions and training information to Zhuang laborers (including women) willing to work.</li> <li>• Establish easily understandable and accessible grievance and feedback channels, clearly informing ethnic minority residents through village/community bulletin boards, WeChat groups, and door-to-door notices on how to file complaints regarding land acquisition compensation, construction impacts, and employment arrangements, ensuring timely and fair resolution.</li> </ul>
	Vulnerable groups	<ul style="list-style-type: none"> <li>• Provide suitable employment opportunities and prioritize local vulnerable groups.</li> <li>• Fully consider and safeguard the interests of vulnerable groups in the design and implementation process, including consultation and negotiation throughout the project design and implementation process;</li> <li>• Project information disclosure, transparency, and widespread promotion;</li> <li>• Develop reasonable compensation and resettlement plans;</li> <li>• Provide livelihood restoration measures (such as necessary skills training and support, etc.);</li> <li>• Establish an effective appeal mechanism;</li> </ul>
	Close proximity to residents of towns, villages, and communities around the project area	<ul style="list-style-type: none"> <li>• Effective measures will be taken during the construction and operation of the project to reduce the emissions of pollutants such as noise, dust, wastewater, and exhaust gas, and to protect the quality of the surrounding environment.</li> <li>• Pay attention to the impact of the project on the surrounding natural ecology, and require the project party to fully consider ecological protection needs during the design and construction process, in order to avoid damaging important ecological resources.</li> <li>• A good communication mechanism should be established with community residents to promptly answer their questions and concerns, ensuring that the project progresses in a harmonious and stable social environment.</li> <li>• Hope the project can create more job opportunities for the local area and improve the income level of residents.</li> <li>• Ensure that the economic benefits brought by the project can benefit local residents.</li> <li>• After the completion of the project, various forms of benefit sharing will be achieved through industry driven initiatives.</li> <li>• Residents hope that the project party can maintain open and transparent information, timely disclose information on the progress, environmental protection, safety measures, and other aspects of the project.</li> </ul>
Other Stakeholders	Qinbei District Leadership Group	<ul style="list-style-type: none"> <li>• Organize and coordinate the PMO and relevant government departments to closely cooperate, complete project preparation with high quality in accordance with the requirements of the Asian Infrastructure Investment Bank, successfully pass the evaluation of the Asian Infrastructure Investment Bank, and promote the smooth implementation of the project to achieve project goals;</li> </ul>
	Qinbei District Development and Reform Bureau PMO	<ul style="list-style-type: none"> <li>• During the project preparation and implementation phase, training will be provided to enhance the project's environmental and social management capabilities. The training will cover the AIIB's stakeholder policies and implementation requirements, project environmental and social documents (such as environmental and social management plans, resettlement plans, stakeholder participation plans, labor management procedures, etc.), environmental and social clauses in bidding and procurement documents, monitoring, etc. The training will target project executing agencies, key government departments at all levels, etc;</li> <li>• During the project construction and operation phase, hire external environmental and social experts with rich experience in AIIB environmental and social policies to help promote the implementation and advancement of the overall project's environmental and social commitment plan;</li> </ul>

		<ul style="list-style-type: none"> <li>Having sufficient resources and personnel arrangements to ensure project funding and personnel are implemented in accordance with the environmental and social commitment plan, and to enhance the level of project environmental and social management;</li> <li>Coordinate and resolve land approval issues for the project;</li> </ul>
	Project Execution Agency (Qinzhou Huangma Asset Management Group Co., Ltd.)	<ul style="list-style-type: none"> <li>During the project preparation and implementation phase, training will be provided to enhance the environmental and social management capabilities of the project. The training will cover relevant policies and requirements for AIIB stakeholders, the implementation of the project's environmental and social commitment plan, labor management procedures, and stakeholder engagement plan. Preparation of environmental and social clauses in bidding and procurement documents, as well as contractor management, etc;</li> <li>Have sufficient resources, funding, and personnel arrangements to ensure that the project is implemented in accordance with the environmental and social commitment plan, environmental and social management plan, labor management procedures, and stakeholder participation plan;</li> <li>Implement the stakeholder engagement plan to enhance project design and management capabilities, as well as sustainable operational benefits.</li> </ul>
Relevant government agencies	Qinbei District Finance Bureau	<ul style="list-style-type: none"> <li>Manage contract finance effectively and make regular withdrawals and reimbursements according to the plan.</li> </ul>
	Qinbei District Natural Resources Bureau	<ul style="list-style-type: none"> <li>The project executing agency should complete the preliminary land use procedures as soon as possible in accordance with the requirements of the new Land Management Law;</li> <li>The project unit attaches great importance to information disclosure and public participation in the early stage, and tries to avoid possible land acquisition conflicts as much as possible;</li> <li>Organize land acquisition and livelihood restoration in accordance with the environmental and social framework policies of the Asian Infrastructure Investment Bank, as well as the requirements of the ESS2 social standard, resettlement plan, and stakeholder engagement plan;</li> </ul>
	Qinbei District Collection Center	<ul style="list-style-type: none"> <li>The project unit attaches great importance to information disclosure and public participation in the early stage, and tries to avoid possible land acquisition conflicts as much as possible;</li> <li>Organize land acquisition and livelihood restoration in accordance with the environmental and social framework policies of the Asian Infrastructure Investment Bank, as well as the requirements of the ESS2 social standard, resettlement plan, and stakeholder engagement plan;</li> <li>Organize and coordinate the consultation of affected individuals in townships/streets, villages/communities.</li> <li>The project design and planning are reasonable, and efforts are made to protect the ecological environment.</li> </ul>
	Civil Affairs Bureau	<ul style="list-style-type: none"> <li>Encourage vulnerable groups to participate in negotiations, employment, and other aspects of the project at all stages, provide care and support to vulnerable groups, participate in the project and benefit from it.</li> </ul>
	Health commission	<ul style="list-style-type: none"> <li>It is necessary to fully understand the potential impact of the project on public safety and health during the construction and operation process, including the risk of infectious disease transmission, environmental pollution risks, etc.</li> <li>Provide necessary health protection measures for project participants, such as setting up medical points, equipping necessary medical equipment and drugs, etc., to cope with sudden illnesses or accidental injuries, and should also have corresponding emergency rescue capabilities.</li> <li>Hope to carry out health education and publicity work in the project construction camp and surrounding</li> </ul>

			<ul style="list-style-type: none"> <li>villages/communities,</li> <li>During the implementation of the project, actively communicate and collaborate with the community organizations of the Health Commission and other departments, carry out health education and publicity work in the construction camp and surrounding villages/communities, ensure the transparency of project information and public participation, improve residents' health awareness and self-protection ability, and jointly promote the smooth implementation and sustainable development of the project.</li> </ul>
		Human Resources and Social Security Bureau	<ul style="list-style-type: none"> <li>Through project implementation, local employment will be stimulated, more job opportunities and positions will be created, and employment pressure will be alleviated. Based on project needs, the required types and quantities of talents will be clearly listed, and project workers will be encouraged to recruit. Priority will be given to local labor, especially those affected by land acquisition and demolition, low-income and unemployed individuals, in order to promote local employment. And collaborate to provide employment guidance and training, promoting workers to achieve employment;</li> <li>It is necessary to establish a sound labor management system for project construction, including basic guarantees such as signing labor contracts, paying wages, arranging working hours, and purchasing work-related injury and accident insurance, caring for employees' occupational health and construction safety, and ensuring harmonious and stable labor relations.</li> <li>Comply with labor regulations, establish an appeal mechanism, do a good job in supervision, and prevent labor disputes and illegal employment practices.</li> </ul>
		Women's Federation	<ul style="list-style-type: none"> <li>Protecting women's rights during project construction and operation;</li> <li>Provide flexible employment opportunities for women;</li> <li>Increase women's participation in project design, consultation, negotiation, employment skills training, safety awareness promotion, and other aspects</li> </ul>
		Ethnic and Religious Affairs Bureau	<ul style="list-style-type: none"> <li>Confirmed that the project construction area does not involve villages or areas with concentrated ethnic minority populations.</li> <li>The scattered Zhuang individuals within the project area of influence are part of a dispersed population resulting from marriage migration or temporary relocation.</li> <li>The Zhuang people are highly consistent with the local Han population in terms of language, marriage customs, production methods, and daily living habits, showing no differentiation.</li> <li>All residents within the project area, regardless of their ethnic minority background, are subject to PRC's socio-economic management and political participation mechanisms. In terms of political rights, social welfare, and public services (such as housing, education, healthcare, employment, and elderly care), ethnic minorities enjoy fully equal policy treatment compared to the Han nationality, including compensation standards, resettlement, and livelihood restoration measures.</li> <li>In accordance with ESS3, meaningful, culturally appropriate, accessible, and gender-sensitive consultations were conducted with Ethnic Zhuang individuals to ensure culturally appropriate benefits and to avoid or mitigate adverse impacts. Consultations indicate strong community support for the Project, particularly due to anticipated employment opportunities. Indigenous Peoples due diligence has been integrated into the ESIA/ESMP and RP, with culturally appropriate engagement, grievance redress, and monitoring measures reflected in the SEP and GRM.</li> </ul>

	Street/township governments and village/community (residential) committees	<ul style="list-style-type: none"> <li>Obtain relevant training to understand the environmental and social management of the Asian Infrastructure Investment Bank, as well as the requirements for non voluntary resettlement and appeal mechanisms in the stakeholder engagement program; Obtain relevant training.</li> </ul>
	Contractors&Suppliers	<ul style="list-style-type: none"> <li>Obtain relevant training to understand the AIIB's environmental and social policies, as well as the labor management requirements in the environmental and social management plan and stakeholder engagement plan.</li> </ul>
	Design unit	<ul style="list-style-type: none"> <li>Regularly communicate with environmental and social assessment units to identify stakeholder needs discovered during the project's environmental and social assessment process as early as possible, in order to optimize project design.</li> </ul>

Data source: E&S Investigation Team (updated in October 2025)

## 4 Completed Stakeholder Engagement Activities

### 4.1 Completed Information Disclosure

In accordance with national laws and regulations, as well as the information disclosure requirements of the ESF, a series of information disclosure activities have been carried out for the Project since its preparation phase commenced. These activities were implemented under the project management structure through the coordinated efforts of the People's Governments of Qinzhou City and Qinbei District, the Development and Reform Commissions of Qinzhou City and Qinbei District (PMO), and Qinzhou Huangma Asset Management Group Co., Ltd. (PIU). Collaboration was maintained with relevant government departments, including the local bureaus of Ecology and Environment, Transport, and Natural Resources, as well as with media outlets.

Concurrently, during the preparation stage, technical units, such as the FSR, ESIA, and the RP preparation units, conducted project information disclosure and notification activities targeting affected townships and communities. The information disseminated covered fundamental project details, potential E&S impacts, proposed management measures, and aspects related to land acquisition and resettlement.

The information disclosure activities completed prior to the project appraisal primarily include:

#### (1) Disclosure of Government and Planning Information

This includes publicly available information regarding the Project's incorporation into national and GZAR-level plans, as well as policy documents, planning approvals, and annual work plans published on the official websites of the People's Governments of Qinzhou City and Qinbei District and their relevant functional departments. This information clarifies the Project's overall positioning, development objectives, investment framework, and implementation pathway, laying the groundwork for public understanding of the Project's basic details.



Figure 4-1 Information Disclosure

#### (2) E&S Information Disclosure

Extensive E&S information disclosure has been carried out for the Project to ensure the public within the project's area of influence can access relevant information in a timely and adequate manner and participate effectively in providing feedback.

To fully protect the public's right to know and participate, the investigation team publicly posted the Project's E&S Impact Notice on bulletin boards in affected communities and villages, including Huangma Community, Jiangbiao Community,

Laoba Village, Qingtang Village, Maqiong Village, and Shuijindong Village, from August 7 to August 21, 2024. The notice included information on potential E&S impacts, proposed mitigation and management measures, as well as methods for public feedback and grievance channels. Building on the information disclosure, consultation activities were further organized to solicit input from residents, ensuring accessibility and effective participation for groups of different ages, genders, ethnic groups, educational backgrounds, and economic statuses.



**Huangma Community**



**Jiangbiao Community**



**Laoba Community**



**Qingtang Community**



**Maqiong Community**



**Shuijindong Community**

**Figure 4-2 Announcements posted by affected villages and communities**

Meanwhile, in accordance with the requirements of the Domestic Environmental Impact Assessment (DEIA), three rounds of public disclosure were completed on the National Construction Project Environmental Information Disclosure platform. The reach of this information was further expanded through announcements in mainstream media outlets such as the Global Times. Subsequently, the ecology and environment department of Qinzhou City lawfully conducted three rounds of

disclosure for the acceptance, review, and approval process of the project's Environmental Impact Assessment report, thereby safeguarding the public's right to know and to participate during the preliminary project stages.



The 1<sup>st</sup> information disclosure of DEIA



The 2<sup>nd</sup> information disclosure of DEIA



The 3<sup>rd</sup> information disclosure of DEIA



The 4<sup>th</sup> information disclosure of DEIA



The 5<sup>th</sup> information disclosure of DEIA



The 6<sup>th</sup> information disclosure of DEIA

Figure 4-3 Information disclosure of DEIA



Figure 4-4 Publication of DEIA in Newspapers

Furthermore, in accordance with AIIB requirements, the PMO is scheduled to submit the revised Chinese and English versions of the E&S documents after the 4<sup>th</sup> review in February 2026. Upon finalization of the Chinese versions, a public disclosure period will be initiated. This will involve physical posting of announcements and establishment of document review points in the affected townships and communities. Online disclosure will be carried out simultaneously through the Qinbei District government portal and the official WeChat account of Qinzhou Huangma Asset Management Group Co., Ltd. The documents proposed for disclosure include the ESIA Report, SEP, RP, and ESMP.

### (3) Disclosure of LA, HD and Resettlement Policies

This includes the public release of standards and procedures related to LA and HD, compensation, and resettlement, as well as the publication of government documents such as land use approvals, acquisition announcements, land price standards, and compensation management measures. These disclosures further safeguard the right to know and to supervise of project-affected people (including 11 Zhuang individuals), ensuring that land acquisition and relocation activities are lawful, open, and transparent.

According to the implementation schedule, the Qinbei District People's Government and the Qinbei District Natural Resources Bureau have issued a project pre-expropriation announcement on April 9, 2024 through the posting of notices and the government website, according to the announcement, from the date of the release of the pre-announcement, the collective economic organizations and land contractors of the land-expropriated villages will not be compensated for the construction (structures) of buildings, trees, nurseries, flowers and other crops and cash crops within the scope of the proposed land acquisition, as well as the unauthorized change of land use to dig ponds and breeding. The project pre-expropriation announcement on April 9, 2024, has been posted on the government website, the bulletin boards of townships and affected villages in the project area.

On June 25, 2025, the Qinbei District People's Government announced the eligibility and entitlement for compensation and relocation for land acquisition compensation and relocation plan, which announced the location and scope of the expropriated collective land, the ownership of the expropriated collective land, the type and area of the land, the land compensation standards and the relocation management measures, and once again clarified that from the date of this announcement, the villages, groups and land contractors of the collective land to be expropriated shall not rush to plant crops or build buildings and structures on the collective land to be

expropriated. The announcement of eligibility and entitlement for compensation and relocation for land acquisition compensation and relocation plan has been posted on the government website, the bulletin boards of the townships and affected villages in the project area.



Figure 4-5 The issued pre-announcement of LA and compensation and RP



Figure 4-6 Public disclosure of LA, HD and resettlement policies

As of the project evaluation, all information disclosure activities that have been carried out are detailed in Table 4-1.

Table 4-1 Completed information disclosure activities

No.	Publicly available information	Units	Stakeholders	Ways of Information Disclosure
1	In September 2022, the National Development and Reform Commission and the Ministry of Finance jointly issued the 2022-2024 alternative project plan for China's	Development and Reform Commission of	Qinzhou Municipal People's Government, Qinzhou	http://fgw.gxzf.gov.cn/fzgggz/lywz/t13189395.shtml

No.	Publicly available information	Units	Stakeholders	Ways of Information Disclosure
	use of loans from the Asian Infrastructure Investment Bank. Two new AIIB loan projects have been added to the list in Guangxi, namely the Lianzhou Bay Ecological Environment Comprehensive Management Project in Beihai City and the China ASEAN Sea Rail Multimodal Logistics Project. The total loan amount is 600 million US dollars, accounting for 12% of the total planned amount of 4.9 billion US dollars issued nationwide, ranking among the top in the country.	Guangxi Zhuang Autonomous Region	Reform Commission, Qinzhou Huangma Asset Management Group Co., Ltd., Qinbei District People's Government, Qinbei District Development and Reform Bureau	
2	Proposal of Qinzhou Transportation Bureau on Accelerating the Planning and Construction of Qinzhou Transfer Center Project for China ASEAN Sea Rail Intermodal Transport "(Reply No. 2022220 of the Second Session of the Sixth Municipal Political Consultative Conference (Qinjiaoban [2022] No. 40)	Qinzhou Transportation Bureau	Qinzhou Municipal People's Government, Qinzhou Municipal Transportation Bureau, and relevant departments of Qinbei District	<a href="http://jtj.qinzhou.gov.cn/zfxxgk/zfxxgknr/rdjoyxtadf/t13932282.shtm">http://jtj.qinzhou.gov.cn/zfxxgk/zfxxgknr/rdjoyxtadf/t13932282.shtm</a>
3	In September 2023, the Development and Reform Commission of Qinzhou City responded to Proposal No. 70 of the Fourth Session of the Sixth People's Congress of Qinzhou City, entitled "Proposal on Promoting the Qinzhou Transport Center Project of China ASEAN Sea Rail Multimodal Logistics Project" (Qinzhou Development and Reform Commission Letter [2023] No. 66)	Qinzhou Development and Reform Commission	Qinzhou Municipal People's Government, Municipal Natural Resources Bureau, Municipal Finance Bureau, Municipal Ecological Environment Bureau, Qinbei District People's Government	<a href="http://www.qinzhou.gov.cn/zfxxgk/fdzdgnr_6/jytablgz/rdjoydf/t17250285.shtml">http://www.qinzhou.gov.cn/zfxxgk/fdzdgnr_6/jytablgz/rdjoydf/t17250285.shtml</a>
4	The domestic Environmental Impact Assessment (DEIA) of the project has conducted three rounds of online information disclosure for the project. The first round was conducted during the preparation period of DEIA (February 2024); The second round was announced after the completion of the full domestic environmental impact assessment (August 2024); The third round was announced before the environmental impact assessment report is submitted to the ecological environment department for approval (August 2024). The disclosure documents include: (i) a description of the project's environmental issues; (ii) Overview of project components and site; (iii) Overview of national laws and regulations ensuring residents' right to express their opinions; (iv) The procedures and scope of	National Construction Project Environmental Information Disclosure Platform Website	Affected residents of Changtian Street and Dadong Town in Qinbei District	<p>First round of public announcement <a href="https://www.eiacloud.com/gs/detail/3?id=40226YM5Fi">https://www.eiacloud.com/gs/detail/3?id=40226YM5Fi</a></p> <p>Second round of public announcement <a href="https://www.eiacloud.com/gs/detail/3?id=40807jRzu7">https://www.eiacloud.com/gs/detail/3?id=40807jRzu7</a></p> <p>Third round of public announcement <a href="https://www.eiacloud.com/gs/detail/3?id=40822dRXih">https://www.eiacloud.com/gs/detail/3?id=40822dRXih</a></p>

No.	Publicly available information	Units	Stakeholders	Ways of Information Disclosure
	domestic environmental impact assessment; (v) Ways to solicit public opinions; (vi) Contact information of the project construction unit, environmental impact assessment unit, and local ecological environment bureau. We consulted with people in areas where potential impacts may occur, as well as appropriate representatives of age, gender, education, poverty, and occupation.			
5	The DEIA of the project has been publicly announced twice by the Global Times in China, on August 9, 2024 and August 14, 2024, respectively.	Environmental and Social Team	Qinzhou Huangma Asset Management Group Co., Ltd., Qinbei District People's Government and Township Streets	Global Times
6	From August 7, 2024 to August 21, 2024, the environmental and social impact of the project will be publicly announced through posting notices in Huangma Community, Jiangbiao Community, Laoba Village, Qingtang Village, Maqiong Village, and Shuiqiandong Village. The purpose is to solicit feedback from the public (including 60 Zhuang individuals) in the affected communities along the line on the survey results, including potential impacts and the latest mitigation measures, and to consult with the communities and schools near the project location.	Environmental and Social Team	Qinzhou Huangma Asset Management Group Co., Ltd., Qinbei District People's Government and Township Streets, Huangma Community, Jiangbiao Community, Laoba Village, Qingtang Village, Maqiong Village, and Shuijingdong Village	Publicize on the bulletin board
7	From August 7, 2024, to August 21, 2024, the Social Stability Risk Assessment status of the project was publicly disclosed through on-site notice postings in Huangma Community, Jiangbiao Community, Laoba Village, Qingtang Village, Maqiong Village, and Shuijingdong Village, ensuring that affected communities along the route are fully informed of relevant information and actively participate in the project's social risk management process.	Environmental and Social Consulting Team	Qinzhou Huangma Asset Management Group Co., Ltd., Qinbei District People's Government and Township Streets, Huangma Community, Jiangbiao Community, Laoba Village, Qingtang Village, Maqiong Village, and Shuijingdong Village	Publicized on the bulletin board
8	The Qinzhou Municipal Ecology and Environment Department conducted 3 rounds of public disclosure for the acceptance, review, and approval process of the Project's EIA Report. The disclosure dates were:	Website of Qinzhou Ecology and Environment	Qinzhou Huangma Asset Management Group Co., Ltd., Qinbei District People's	First Round: <a href="http://sthj.qinzhou.gov.cn/hjbh/hjhcsp/t19052302.shtml">http://sthj.qinzhou.gov.cn/hjbh/hjhcsp/t19052302.shtml</a> Second Round: <a href="http://sthj.qin">http://sthj.qin</a>

No.	Publicly available information	Units	Stakeholders	Ways of Information Disclosure
	September 29, 2024, October 17, 2024 and October 25, 2024	ent Bureau	Government and Township Streets	<a href="http://zhou.gov.cn/hjbh/hjhcsp/t19108094.shtml">zhou.gov.cn/hjbh/hjhcsp/t19108094.shtml</a> Third Round: <a href="http://sthij.qinzhou.gov.cn/zfxxgk/fdzdgk/zdly/xzql/xzsk/t19179338.shtml">http://sthij.qinzhou.gov.cn/zfxxgk/fdzdgk/zdly/xzql/xzsk/t19179338.shtml</a>
9	On December 3, 2024, the Qinbei District People's Government approved the Project's Social Stability Risk Assessment Report.	People's Government of Qinbei District	Qinzhou Huangma Asset Management Group Co., Ltd., Qinbei District People's Government and Township Streets	Government documents, project location village (community) bulletin board
10	June 2020, illustration: "Interim Measures for the Management of Collective Land Acquisition and Housing Relocation Compensation and Resettlement in Qinbei District" BZBG [2020] No. 4	Qinbei District People's Government	People's governments, street offices, and all residents of various towns and villages in Qinbei District	<a href="http://www.qinbei.gov.cn/zfxxgk/qbqzwgkpt/qbqrmzfbgs/fdzdgknr/bmwj_17/t14454243.shtml">http://www.qinbei.gov.cn/zfxxgk/qbqzwgkpt/qbqrmzfbgs/fdzdgknr/bmwj_17/t14454243.shtml</a>
11	Notice of the People's Government of Qinzhou City on the Announcement and Implementation of a New Round of Comprehensive Land Price Standards for Land Acquisition Areas (QZG [2023] No. 1)	Qinbei District People's Government	The people's governments of each county and district in Qinzhou City, the management committees of each development zone and management zone, and the municipal committees, offices, and bureaus	<a href="http://www.qinzhou.gov.cn/zfxxgk/zcwj/bjzfwj/qzg/t15981123.shtml">http://www.qinzhou.gov.cn/zfxxgk/zcwj/bjzfwj/qzg/t15981123.shtml</a>
12	Notice of the Qinbei District People's Government Office on Implementing Compensation Standards for Crops and Above-Ground Attachments (BZB [2023] No. 9)	Qinzhou City People's Government	Qinzhou Huangma Asset Management Group Co., Ltd., Changtian Street Office, Dadong Town People's Government	<a href="http://www.qinbei.gov.cn/zfxxgk/qbqzwgkpt/qbqrmzfbgs/fdzdgknr/bmwj_17/t19164567.shtml">http://www.qinbei.gov.cn/zfxxgk/qbqzwgkpt/qbqrmzfbgs/fdzdgknr/bmwj_17/t19164567.shtml</a>
13	On March 27, 2024, a notice was issued to Changtian Street (QZF [2024] No. 27) and Dadong Town People's Government (QZF [2024] No. 28) regarding the issuance of land acquisition and relocation tasks for the project	Qinbei District Land and Housing Acquisition Center	Qinzhou Huangma Asset Management Group Co., Ltd., Changtian Street Office, Dadong Town People's Government	<a href="http://www.qinbei.gov.cn/zfxxgk/qbqzwgkpt/qbqtdfwzsxz/fdzdgknr/bmwj_13/t18236283.shtml">http://www.qinbei.gov.cn/zfxxgk/qbqzwgkpt/qbqtdfwzsxz/fdzdgknr/bmwj_13/t18236283.shtml</a> <a href="http://www.qinbei.gov.cn/zfxxgk/qbqzwgkpt/qbqtdfwzsxz/fdzdgknr/bmwj_13/t18236309.shtml">http://www.qinbei.gov.cn/zfxxgk/qbqzwgkpt/qbqtdfwzsxz/fdzdgknr/bmwj_13/t18236309.shtml</a>
14	On April 9, 2024, the QDG issued the Pre-Announcement on Land	Qinbei District	Dadong Town (Jiangbiao	<a href="http://www.qinbei.gov.cn/zfxxgk/fdzdgk/zdly">http://www.qinbei.gov.cn/zfxxgk/fdzdgk/zdly</a>

No.	Publicly available information	Units	Stakeholders	Ways of Information Disclosure
	Acquisition [2024] No. 5.	People's Government	Community, Hengling Village), Changtian Street (Longwan Community, Chengbei Community, Real Madrid Community), and Sanshiliuqu Forest Farm in Qinzhou City, Qinbei District	xxgk/tdfwzs/t18685962.shtml
15	According to the Notice on Assigning Land Acquisition (Lease) and Relocation Tasks for 4 Off-Site Spoil Disposal Points beyond the Red Line of the Project's Access Road to Changtian Subdistrict Office (Qinbei Expropriation Center Fa [2024] No. 126), Dated November 15, 2024. The notice mandates the Changtian Subdistrict Office to establish a working group for implementing the land acquisition (lease) and relocation tasks.	Qinzhou Qinbei District Land and Housing Expropriation Center	Qinzhou Huangma Asset Management Group Co., Ltd., Qinbei District Finance Bureau, Changtian Subdistrict Office, Affected Residents	<a href="http://www.qinbei.gov.cn/zfxxgk/qbqzgwgkpt/qbqtdfwzsxz/fdzdgnr/bmwj_13/t19329379.shtml">http://www.qinbei.gov.cn/zfxxgk/qbqzgwgkpt/qbqtdfwzsxz/fdzdgnr/bmwj_13/t19329379.shtml</a>
16	On June 25, 2025, the QDG issued the Announcement on the Land Acquisition Compensation and Resettlement Plan No. 7 [2025].	QDG	Dadong Town (Jiangbiao Community, Hengling Village) and Changtian Sub-district (Longwan Community, Chengbei Community, Huangma Community) of Qinbei District, and Sanshiliuqu Forest Farm in Qinzhou City, Qinbei District	<a href="http://www.qinbei.gov.cn/zfxxgk/fdzdgnk/zdlyxxgk/tdfwzs/t23802438.shtml">http://www.qinbei.gov.cn/zfxxgk/fdzdgnk/zdlyxxgk/tdfwzs/t23802438.shtml</a>

## 4.2 Stakeholder Engagement Activities that Have Been Carried Out

To meet the requirements for "meaningful consultation" under the AIIB's ESF, the project conducted stakeholder identification and management during the preparation of the ESIA. By continuously gathering and responding to opinions and concerns from various parties, reasonable feedback was incorporated into the project design and the ESMP to mitigate environmental and social risks.

During the project preparation phase, the E&S consultants organized extensive public participation and consultation activities in accordance with the requirements of ESF, ESS1, ESS2, ESS3, and in compliance with relevant domestic regulations, the E&S Team strictly adhered to the principle of "Free, Prior and Informed Consent (FPIC)" in organizing and conducting extensive public participation and consultation activities. Through methods such as field surveys, focus group discussions, key informant interviews, questionnaire surveys, and online meetings, and with the assistance of the PMO and the PIU, the consultants engaged in broad

communication with relevant government departments in Qinbei District, community residents, groups affected by land acquisition and resettlement, residents in environmentally and socially sensitive areas, and diverse groups including women, the elderly, and ethnic minorities. The discussions covered key issues such as project overview, potential E&S impacts, mitigation measures, and the RP. Findings and outcomes from these discussions were promptly fed back to the feasibility study team, PMO, and PIU to support project design optimization and decision-making. Following the field survey, the consultants conducted follow-up assessments and public participation activities, engaging in thorough communication and confirmation with the implementation unit regarding risk mitigation measures, plan optimization, and implementation schedules, thereby further refining the social impact assessment and dynamically improving management measures.

The main public participation activities carried out prior to the assessment are summarized below:

(1) From May 8 to 20, 2024, a field survey was conducted, comprising 16 focus group discussions with a total of 240 participants; 45 key informant interviews were completed; and 380<sup>2</sup> valid E&S questionnaires were collected. (2) In October 2024, an online meeting was held to discuss the relocation of the Tudimiao in Hengling Village. (3) From March to April 2025, meetings were organized to discuss land acquisition compensation, support for vulnerable groups, and social security measures. (4) In July 2025, an online meeting was held with the PMO and the Qinbei District Housing and Land Acquisition Center to verify the project's area of impact and physical assets. Discussions also covered compensation standards, resettlement plans, implementation schedules, and detailed revisions to the report. (5) On September 15–16, 2025, online meetings were conducted with local potential photovoltaic enterprises to carry out due diligence on occupational health and labor management. (6) On September 23, 2025, the AIIB mission, together with the PMO, the E&S team, and local government representatives, conducted a site visit. They interviewed villagers potentially affected by railway noise and vibration, inspected the current condition and proposed new site of the Tudimiao in Hengling Village, as well as the status of the resettlement community. Discussions were held on the resettlement plan and the relocation of the Tudimiao. For details, see Appendix 2. These activities, conducted throughout the project preparation process, ensured effective participation of stakeholders at different stages. Through continuous information disclosure and solicitation of feedback, concerns were identified and addressed, the ESIA was refined, and mitigation and management measures were optimized, laying a solid foundation for risk prevention and dynamic management in subsequent implementation phases.



<sup>2</sup> Among a total of 380 valid questionnaires, 193 were completed by residents directly affected by LA and HD, accounting for 51% of the total. The remaining 187 questionnaires were from non-LA-and-HD residents within the project impact area, representing 49%.



**Figure 4-6 Special Meeting on Project Coordination and Promotion**

Through a series of public participation activities (including meetings, key informant interviews, site inspections, and consultations), stakeholder feedback was systematically collected and analyzed. The main findings are summarized as follows:

**(1) Broad Support for the Project**

Government departments at all levels in Qinbei District, township/sub-district administrations within the project area, and residents of affected villages and communities generally (including the EMs) expressed support for the project. Stakeholders recognize its potential positive impacts, including enhancing regional integrated logistics capacity and sea-rail intermodal efficiency, promoting local economic development, and increasing employment opportunities.

**(2) Concerns Regarding Community Health and Safety**

Residents are widely concerned about potential construction-phase impacts such as dust, noise, vibration, traffic safety hazards, solid waste pollution, adverse effects related to cultural customs and practices and infectious disease transmission. Those most affected include residents within 200m of the project corridor—covering six natural villages (Hengling, Laoba, Qingtang, Maqiong, Shuijindong), one residential compound (Hanlin Zunfu), and one kindergarten (totaling approximately 1,865 individuals). During operation, 21 households in Laoba Village within 60m of the main railway line may be affected by noise, and 9 households by vibration. Approximately five schools and related villages within a 5 km radius of the planned waste transfer station (totaling about 37,268 individuals) will also receive special attention.

The PMO and PIU have actively responded to these concerns through specific measures, which have been incorporated into the ESMP and SEP, including: (1) Daily water spraying for dust suppression, enclosed transport vehicles, enclosed construction sites, and regular cleaning of access roads; restrictions on nighttime operations. (2) Rational planning of construction vehicle routes to avoid sensitive areas such as schools and residential zones; prohibitions on heavy vehicles during peak hours; speed reduction and no-horn policies near communities; installation of speed limits, no-horn signs, warning signs, and safety barriers; and improved nighttime lighting. (3) Joint safety awareness campaigns and training with townships, village committees, and schools; dissemination of construction schedules and detour information via WeChat groups and notice boards; and regular public consultations to listen to and address concerns. (4) Segregated storage and compliant disposal of construction waste; centralized collection of domestic waste by sanitation departments. (5) Health and epidemic prevention training for migrant workers, including HIV/AIDS and infectious disease prevention awareness. (6) Use of low-noise track structures and green noise barriers during operation; speed limits and enhanced track maintenance. (7) Installation of noise-reducing windows for scattered affected households after the dedicated railway becomes operational; regular follow-up meetings and dynamic evaluation of mitigation effectiveness for noise and

vibration impacts. (8) Sealed deodorization, regular disinfection, and environmental monitoring at the waste transfer station. (9) Construction activities will avoid interfering with the cultural activities of ethnic minorities in the project-affected area. During traditional Zhuang festivals such as "Sanyuesan"<sup>3</sup>, the contractor will suspend construction to respect Zhuang cultural customs and ensure that both Zhuang and Han residents can carry out their festival celebrations normally. The construction schedule will be communicated in advance and timelines will be coordinated to avoid conflicts.

### **(3) Emphasis on Land Acquisition Compensation and Livelihood Restoration**

Affected residents (including 11 Zhuang individuals) expect full, timely, and reasonable compensation and proper resettlement. After full consultation, it was decided that the simple Tudimiao in Laoba Village (Hengling) will be compensated monetarily, with villagers responsible for its relocation. Grave relocations will be compensated at replacement cost, with affected individuals choosing either government-organized relocation to the Qinbei District public cemetery or cash compensation for self-relocation. All affected parties will be informed one month in advance. These measures are included in the RP and will be regularly monitored.

### **(4) Demand for Increased Employment Opportunities**

There is a general expectation among residents in the project area, including ethnic minorities, the project will prioritize local hiring during both construction and operation phases to raise household incomes. Accordingly, the PIU will require contractors to prioritize local labor, particularly for unskilled positions, and to offer employment opportunities to local women and low-income groups, with a target of at least 20% female workers. In collaboration with the Human Resources and Social Security Bureau and the Women's Federation, the project will also organize specialized skills training to enhance the employability of vulnerable groups. These commitments are included in the ESMP and tender documents and will be strictly implemented and regularly evaluated.

### **(5) Focus on Workers' Labor Rights and Occupational Health and Safety**

The project will enhance its labor management system to ensure compliance with national labor regulations and AIB requirements. Contractors must sign labor contracts with all workers, contribute to social insurance, and purchase accident injury insurance. They are also required to implement OHS training and provide necessary protective equipment. The Project Management Office will establish and monitor the operation of a worker grievance mechanism to ensure timely resolution of labor disputes, work-related injuries, and safety hazards. Coordination with relevant departments will be strengthened to ensure the effective implementation of these measures. An ESMP, which includes a Labor Management Plan, has been developed and incorporated into the tender documents and contract requirements for contractors and suppliers.

### **(6) Establishment and Effective Operation of GRM**

To ensure timely responses to stakeholder concerns, the project has established a multi-level grievance channel with designated personnel responsible. Residents (including 60 Zhuang individuals) can raise issues through channels such as village/resident groups. Additionally, residents can report project-related problems directly to local village/neighborhood committee officials, as well as to the Town People's Governments and Sub-district Offices. After these entities raise the issues, the PMO, Huangma, and other relevant departments will implement appropriate solutions. The Qinbei District Government and the AIB's oversight mechanisms will

---

<sup>3</sup> The Sanyuesan Festival (Third Day of the Third Lunar Month) is a traditional festival of the Zhuang people and one of the items listed on the National Intangible Cultural Heritage Inventory.

ensure the effective resolution of major disputes. The public can submit grievances through various means, including in-person meetings, telephone, letters, and email. All grievances are recorded, tracked, and addressed with timely feedback. The mechanism's operation emphasizes anonymity protection and procedural transparency, with its performance included in quarterly reports and regularly disclosed, thereby safeguarding stakeholders' rights to know, participate, and supervise.

**In summary**, while there is broad public support for the project, significant concerns exist regarding environmental impacts, traffic safety, livelihood restoration, labor rights, and occupational health and safety during implementation. The PMO has fully incorporated feedback and has optimized and implemented measures in the project's design, management, and execution. These include: Protection of E&S sensitive points and environmental control measures, incorporated into the ESMP; Land acquisition, compensation, resettlement, and livelihood restoration, included in the RP with a dynamic monitoring mechanism. Inclusive employment and gender equality measures, integrated into the Gender Action Plan(GAP). Ongoing communication and the grievance mechanism, operated through the SEP. Through continuous public participation and E&S management, the project has effectively mitigated potential social risks, laying a solid foundation for the smooth implementation of project objectives and sustainable development.

The detailed investigation and analysis results can be found in ESIA, and the public consultations and results that have been conducted are detailed in Table 4-3

**Table 4-3 Public Consultations Conducted and Results**

Time	Location	Stakeholder Participants	Consultation Content	Adopting methods	Results
May 31st to June 2nd, 2023	Qinzhou Huangma Asset Management Group Co., Ltd.,	Representatives of AIIB mission, Finance Department of Guangxi Zhuang Autonomous Region, Guangxi Development and Reform Commission, Qinzhou Development and Reform Commission, The Bureau of Finance, Qinzhou Huangma Asset Management Group Co., Ltd., Qinbei District Government, Design unit and bidding agency	Promote the preliminary preparation work of the project	Symposium and Seminar	<ul style="list-style-type: none"> <li>- Introduced the progress of project preparation, including project scope and construction content, feasibility study report, implementation arrangement, work plan schedule, etc.</li> <li>- The AIIB team visited the project site one after another to gain a detailed understanding of the construction content and project related situation. They suggested that the project unit further clarify the allocation of funds, accelerate resource investment, and ensure the orderly progress of project preparation in the early stage.</li> <li>- The AIIB team conducted group discussions and on-site clarifications on procurement review, financial management, environmental and social impact assessment, RP, Ethnic Minority Development Measures, and other related work, achieving good results.</li> <li>- Convene a project summary meeting to discuss project objectives, planning and design, implementation arrangements, financing plans, key milestones, agreement signing processes, and other aspects.</li> <li>- The AIIB mission hopes that Qinzhou City will continue to solidly promote the preliminary preparations for the project in accordance with the relevant procedures and requirements of China and the AIIB.</li> <li>- The Qinzhou Municipal Government and relevant departments have stated that they will improve the project construction plan, implement supporting funding sources, make arrangements for funding mechanisms, and promote the effective progress of the project according to the work requirements of the Asian Infrastructure Investment Bank.</li> </ul>
January 16-19, 2024	Qinzhou Huangma Asset Management Group Co., Ltd.,	Representatives from AIIB mission, Guangxi Autonomous Region Development and Reform Commission, Finance Department, Natural Resources Department, Forestry Department, Transport Department, China Railway Nanning Group Co., Ltd., Qinzhou	Promote the launch of the project (the third due diligence investigation of the project)	Symposium	<ul style="list-style-type: none"> <li>- At the project kickoff meeting, the People's Government of Qinbei District introduced the progress of project preparation, including the preparation of feasibility study report, procurement strategy and plan, environmental and social assessment report and progress in the preparation of resettlement plan, investment attraction and iron related work, etc. The feasibility study preparation unit introduced the feasibility study report, and the attendees discussed the project construction content, land approval process, coordination of railway related issues, and implementation of supporting funds.</li> <li>- Guangxi and the AIIB mission had discussions and exchanges on the refinement of subprojects and construction content, land acquisition and</li> </ul>

		City and Qinbei District governments and relevant departments, feasibility study preparation units, etc			demolition procedures, project financing plans, and the implementation of preliminary funds. A project schedule was developed by reversing the construction period, and a good discussion effect was achieved. - -Complete the project inspection memorandum.
May 8-18, 2024	Changtian Street Office, Dadong Town, Huangma Community, Chengbei Community, Longwan Community, Hengling Village, Jiangbiao Community, Dajing Community, Shantang Community, and Dadong Village in Qinbei District, Qinzhou City	Beneficial residents, residents in environmentally and socially sensitive areas, and those affected by land acquisition and demolition, including women, vulnerable groups, teachers and students, cadres, etc	Understand the project environment and social impact, resettlement situation, etc	Symposium, key informant interview, questionnaire survey	<ul style="list-style-type: none"> <li>- 400 face-to-face environmental and social impact questionnaires have been completed in the project area. After statistical analysis, 380 valid questionnaires were obtained, with a questionnaire effectiveness rate of 95%. The respondents covered different age groups, education levels, and occupations, including 176 females (46%), 204 males (54%) and 20 EMs (5%). At the same time, a total of 16 resident focus group discussions were held in the project area, affecting villages and communities as well as surrounding villages/communities, with about 240 participants, including about 84 women, accounting for 35%. A total of 136 people participated; Among them, 71 were women, accounting for 52.20%; 14 EMs, accounting for 5.83%; 21 low-income individuals, accounting for 8.75%.</li> <li>- Understand the basic situation of the project village/community, including population structure, economic status, social services, distribution, socioeconomic characteristics, and cultural conditions of ethnic minorities and other basic data.</li> <li>- Understand residents' perceptions, attitudes, and expectations towards the project; Especially for women and low-income groups, explore their special needs and challenges in the project.</li> <li>- Collect concerns and suggestions from all residents in the project area, including the Zhuang, regarding potential issues brought by the project, covering multiple aspects such as land acquisition and demolition, potential environmental and social risks, and employment.</li> <li>- Understand the concerns and improvement suggestions of residents near the proposed railway dedicated line regarding railway noise and vibration.</li> </ul>
May 8, 2024	Qinzhou Huangma Asset Management Group Co., Ltd.,	Qinzhou Huangma Asset Management Group Co., Ltd., Qinbei District Natural Resources Bureau, Qinbei District Women's Federation, Qinbei District Transportation Bureau, Qinbei District Ecological Environment Bureau, Qinbei	Discuss the feasibility study report of the project and the requirements of the AIB's environmental and social documents	Symposium and Promotion Meeting	<ul style="list-style-type: none"> <li>- Carry out environmental and social document preparation work through coordination and communication;</li> </ul>



		Guangtou gas station, Huangma sewage treatment plant, Hainuoer domestic waste landfill, Huangma marshalling yard, environmental and social consultant	environments		about whether there are any historical issues left over from land acquisition and relocation; <ul style="list-style-type: none"> <li>- 3. Discuss the impact of project construction on them, as well as their opinions and suggestions on project construction;</li> <li>- 4. Understand the impact of existing facility operation on the surrounding area, including noise, odor, solid waste pollution, etc;</li> <li>- 5. Understand the public participation methods and complaint records of existing facilities during operation; 6. Understand personnel allocation, gender composition, etc;</li> </ul>
May 19-24, 2024	Qinzhou Huangma Asset Management Group Co., Ltd.,	PMO, local government departments, ecological environment bureau, representatives of townships and streets, design institutes, and relevant parties jointly participate in discussions, benefiting residents, residents of environmentally and socially sensitive points, and people affected by LA and HD, including women, vulnerable groups, cadres, etc	Re negotiation and confirmation of stakeholder concerns	Symposium	<ul style="list-style-type: none"> <li>- The meeting confirmed the key components, mitigation measures, and implementation responsibilities outlined in the ESMP. Discussions centered on potential E&amp;S impacts of the project, during which feedback from all parties was extensively gathered. Key measures—such as the relocation of the Tudimiao and adjustments to the dedicated railway line—were optimized and refined. These steps were taken to ensure the ESMP effectively addresses potential issues while aligning with the needs and expectations of all stakeholders.</li> </ul>
2024.10	Online Meeting	Qinbei District Government and NRB; Qinzhou Huangma Assets Operation Group Co., Ltd.; representatives of Hengling Village Committee; E&S Consultants, etc.	Discussion on relocation arrangements for the Tudimiao in Hengling Village	Online meeting, discussion and exchange	<ul style="list-style-type: none"> <li>- In-depth discussions were held on the schedule, site selection, construction method, and cultural preservation approaches for the Tudimiao relocation.</li> <li>- It was confirmed that the relocation plan must balance cultural continuity with community acceptance, emphasizing respect for local customs and ensuring an open and transparent process.</li> <li>- The Qinbei District Government was designated to lead the implementation plan, requiring completion of public participation and updates to E&amp;S documents prior to relocation.</li> </ul>
2025.03-04	Qinzhou Huangma Asset Management Group Co., Ltd.,	Qinzhou City and Qinbei District Governments; Qinbei District Land Acquisition and Demolition Center; Bureau of Human Resources and Social Security; Bureau of Civil Affairs; Women's	Exchange on land acquisition compensation, support for vulnerable groups, and social security	Seminar, thematic workshop	<ul style="list-style-type: none"> <li>- Discussions focused on compensation standards, support mechanisms for vulnerable groups, and social security measures. The Women's Federation and Bureau of Civil Affairs proposed assistance measures targeting low-income families, single-parent women, and the elderly.</li> <li>- Recommendations were made to establish a continuous monitoring</li> </ul>

		Federation; representatives of low-income households; E&S Consultants, etc.	measures		mechanism and information feedback channels for vulnerable groups to ensure fairness and inclusivity during project implementation.
2025.07	Online Meeting	PMO; Qinbei District Housing and Land Acquisition Center; Design Institute; E&S Consultants	Verification of the project's area of impact and physical assets	Online meeting, working discussion	- The PMO and Qinbei District Housing and Land Acquisition Center verified the project's area of influence and physical assets. Discussions and revisions were made regarding the reported physical assets, land indicators, compensation standards, resettlement plans, implementation schedules, and detailed aspects of the report.
2025.09.15-16	Online Meeting	PIU; E&S Consultants; representatives of potential photovoltaic enterprises, etc.	Due diligence on occupational health and labor management	Online meeting	- Conducted due diligence on occupational health and labor management with local potential photovoltaic enterprises and construction contractors. Assessed their occupational health and safety management systems and labor rights protection mechanisms, evaluating management practices in safety training, occupational disease prevention, and protection of female workers' rights.
2025.09.23	Hengling Village and surrounding project site	PMO; E&S team; Qinbei District NRB; Qinbei District Government and village committee representatives	Field interviews and inspection of the Tudimiao relocation and affected residents	Site visit, focus group discussions	- The AIIB expert team, together with the PMO, E&S team, and local government representatives, conducted a site visit. They interviewed villagers potentially affected by railway noise and vibration, inspected the current condition and proposed relocation site of the Tudimiao in Hengling Village, and observed the construction progress of the resettlement community. Discussions were held on the resettlement plan, construction of the resettlement community, and the relocation plan.

## **5 Stakeholder Engagement Plan**

### **5.1 Purpose and Time**

The stakeholder engagement plan is developed based on stakeholder analysis, particularly stakeholder engagement needs analysis. Different stakeholders carry out subproject activities based on three stages: project preparation, project implementation, and operation. According to the analysis, during the project implementation and operation period, the participation needs of all stakeholders are generally consistent.

The purpose is to: i) regularly consult with major stakeholder organizations to inform them of the project's purpose, design, content, and activities; li) Transparent communication and exchange mechanisms to ensure that the needs and requirements of stakeholders are met.

During the project preparation phase, Qinzhou Huangma Asset Management Group Co., Ltd. conducted an environmental and social impact assessment survey and conducted extensive public consultation and participation. The feedback from stakeholders has been taken into account in the project design.

During the implementation and operation of the project, Qinzhou Huangma Asset Management Group Co., Ltd. held periodic coordination meetings on environmental and social issues as needed to ensure the implementation of relevant environment and social plans. Qinzhou Huangma Asset Management Group Co., Ltd. published project progress information, environmental and social performance information, etc. on its official website every quarter for public reference; At the same time, stakeholder consultations were held at least every six months in the affected towns/villages within the project area to communicate with the public about project objectives, implementation information, environmental and social impacts, and measures taken; Published relevant information on project progress and effectiveness, and answered public concerns and questions.

### **5.2 Proposed Strategy for Information Disclosure**

#### **5.2.1 The Content of Information Disclosure**

The information disclosure of the project is mainly carried out directly by the PMO and executing agencies, or by guiding and supervising relevant units to implement it, information to be disclosed and disclosure methods may vary by locations and targeted people. Information on environmental and social aspects of the project should be released in a timely and language-friendly manner to affected parties and other stakeholders in an appropriate location so that stakeholders can have rich inputs on the design and implementation of the project. Detailed information is shown in Table 5-1.

For the projects, disclosed information will include the E&S documents disclosed to the subprojects nearby communities and residents (including the Zhuang residents), workers concerned, and the public before the project appraisal, and information on the LMP, GRM and external E&S monitoring.

For different subprojects, key targets groups and contents of information disclosure should include but be not limited to:

- For workers during the construction and operation periods of the project, focus on disclosing the content of the labor management procedures (including labor contracts, safety management training, salary, working hours, etc.), establishing and publicizing an appeal mechanism, and external monitoring related to it;

- For surrounding communities and residents (including the Zhuang residents), focus on disclosing the content and scope of the project construction, the construction period, establishing and publicizing an appeal mechanism, encouraging community residents to provide feedback on problems that arise during the project construction process, as well as external monitoring related to the environment and society;
- Regarding the direct impact of land acquisition and demolition on the project, it is important to disclose information on land acquisition compensation policies and standards, livelihood restoration measures, and payments before project construction to ensure that the legitimate rights and interests of those affected by land acquisition and demolition are protected.

**Table 5-1 Main Content and Schedule of Project Information Disclosure**

Stage	The main content of information disclosure	Target group	Disclosure method	Time nodes	Responsible party
Preparation phase (including project design)	Project construction information, environmental and social documents (including social and environmental impact assessments, stakeholder engagement plans, resettlement plans, environmental and social management plans, etc.)	Residents of affected villages/communities (including Huangma Community, Longwan Community, Chengbei Community, Hengling Village, Jiangbiao Community) under Changtian Street and Dadong Town in Qinbei, as well as surrounding villages/communities, including women, the elderly, people with disabilities, low-income populations, teachers, EMs and students, etc	Government official website, on-site lectures or symposiums, village/community bulletin boards, distribution of brochures, etc	2026.02	AIIB, Qinbei District People's Government, PMO, Qinzhou Huangma Asset Management Group Co., Ltd
	Detailed Measurement Survey (DMS) results	Residents of affected villages/communities (including Huangma Community, Longwan Community, Chengbei Community, Hengling Village, Jiangbiao Community) under Changtian Street and Dadong Town in Qinbei, as well as surrounding villages/communities, including women, the elderly, people with disabilities, low-income populations, teachers, and EMs , etc	Township/Sub-district and village/community bulletin boards	2026.05	QDG, PMO, Qinzhou Huangma Asset Management Group Co., Ltd , Qinbei District Ethnic and Religious Affairs Bureau, Qinbei District Housing and Land Acquisition Center
	Updated Resettlement Plan (if applicable)	Residents of affected villages/communities (including Huangma Community, Longwan Community, Chengbei Community, Hengling Village, Jiangbiao	Government official website (link to be provided after posting), door-to-door briefings or consultation meetings, village/community bulletin	2026.07	AIIB, QDG, PMO, Qinzhou Huangma Asset Management Group Co., Ltd

Stage	The main content of information disclosure	Target group	Disclosure method	Time nodes	Responsible party
		Community) under Changtian Street and Dadong Town in Qinbei, as well as surrounding villages/communities, including women, the elderly, people with disabilities, low-income populations, teachers, and EMs, etc	boards, distribution of brochures, etc.		
	Land acquisition and demolition related activities (including acquisition notices, land acquisition compensation plans, demolition and resettlement plans, livelihood restoration measures, and compensation payment information, etc.)	Project-affected people in the land acquisition and demolition of villages/communities under Changtian Street and Dadong Town in Qinbei District (including Huangma Community, Longwan Community, Chengbei Community, Hengling Village, Jiangbiao Community), including women, the elderly, people with disabilities, , EMs low-income population, etc	Government website, village assembly, village/community bulletin board, distribution of brochures, on-site explanations, etc	2026.05	AIB, Qinbei District People's Government, PMO, Qinzhou Huangma Asset Management Group Co., Ltd

Stage	The main content of information disclosure	Target group	Disclosure method	Time nodes	Responsible party
	Announcement of Results of Stakeholder Consultation Activities	Residents of affected villages/communities (including Huangma Community, Longwan Community, Chengbei Community, Hengling Village, Jiangbiao Community) under Changtian Street and Dadong Town in Qinbei, as well as surrounding villages/communities, including women, the elderly, people with disabilities, low-income populations, teachers, EMs and students, etc	symposiums, village/community bulletin boards, distribution of brochures, etc	2026.4-2026.5	AIIB, Qinbei District People's Government, PMO, Qinzhou Huangma Asset Management Group Co., Ltd, Qinbei District Ethnic and Religious Affairs Bureau, Qinbei District Expropriation Center
Implementation and operation phase	Project information (mainly including project approval information, major design change information, bidding information, construction related information, quality and safety supervision information, completion related information, etc.)	Residents of affected villages/communities (including Huangma Community, Longwan Community, Chengbei Community, Hengling Village, Jiangbiao Community) under Changtian Street and Dadong Town in Qinbei, as well as surrounding villages/communities, including women, the elderly, people with disabilities, low-income populations, teachers, EMs and students, etc	Government official website, on-site lectures or symposiums, village/community bulletin boards, distribution of brochures, etc	2026.02-2031.12	AIIB, Qinbei District People's Government, PMO, Qinzhou Huangma Asset Management Group Co., Ltd, each contractor and supervisor
	Labor and working conditions, health and safety, appeal mechanism	All workers involved in project implementation	Website, set up information bulletin boards or bulletin boards, post information such as labor management	2026.10-2031.12	Project Management Office , Qinzhou Huangma Asset Management Group Co., Ltd, project executing agency,

Stage	The main content of information disclosure	Target group	Disclosure method	Time nodes	Responsible party
			procedures, safety operating procedures, health tips, flyers, meetings, etc		project operating agency, contractor, supervisor, external monitoring
	GRM for the safety and health of residents in the project area	Residents of affected villages/communities (including Huangma Community, Longwan Community, Chengbei Community, Hengling Village, Jiangbiao Community) under Changtian Street and Dadong Town in Qinbei, as well as surrounding villages/communities, including women, the elderly, people with disabilities, low-income populations, teachers, EMs and students, etc	Government announcements, village meetings, village/community bulletin boards, brochures, on-site explanations, hotline: 12345/12369/12338.	2026.02-2031.12	PMO, Qinzhou Huangma Asset Management Group Co., Ltd, Changtian Street Office, Dadong Town Government, Community/Village (Residential) Committees (Huangma Community, Longwan Community, Chengbei Community, Hengling Village, Jiangbiao Community)
	Employment recruitment information	Residents of affected villages/communities (including Huangma Community, Longwan Community, Chengbei Community, Hengling Village, Jiangbiao Community) under Changtian Street and Dadong Town in Qinbei, as well as surrounding villages/communities, including women, the elderly, people with disabilities, low-income populations, etc	Village/community bulletin board, work group, Gongzhonghao and other platforms, symposium, etc	2026.10-2031.12	PMO, Qinzhou Huangma Asset Management Group Co., Ltd, Changtian Street Office, Dadong Town Government, Community/Village (Residential) Committees (Huangma Community, Longwan Community, Chengbei Community, Hengling Village, Jiangbiao Community)
	Environmental and Social Monitoring Report, External Monitoring Report on Resettlement and Related Content	Residents and vulnerable groups in villages/communities surrounding the project area and construction personnel	Website, on-site, bulletin board	2027.01-2031.12	PMO (Qinbei District Development and Reform Bureau), Qinzhou Huangma Asset Management Group Co., Ltd,

### 5.2.2 Ways of Information Disclosure

The PMO and executing unit will promptly release project information and potential environmental and social related information (whether positive or negative) in a language understandable to stakeholders at appropriate locations. Stakeholders can provide rich opinions on project activities.

For different types of subprojects and stakeholders, different information disclosure methods should be used, such as:

- For all stakeholders, disclosing the project information, E&S documents, E&S management measures, environmental monitoring reports E&S external monitoring report, land acquisition and the compensation, etc. on the websites of the PMO or PIU.
- For affected workers: disclosing the project information, LMP, GRM, etc. By the PIU's websites, brochure, worker meeting, WeChat account, QQ account, etc. Workers exposed to OHS risk should be informed of the occupational diseases and the consequences through the signed labor contracts. For the information disclosure of the project workers, ensure that the fully understand their own rights, the safety and health status of the working environment, and management procedures, safeguards the legitimate rights and interests of workers, and promote the smooth progress of the project.
- Publicize project information, environmental and social documents, environmental monitoring reports, and related health and safety risk management measures to residents in the project area (including 60 Zhuang individuals) through community bulletin boards, community meetings, distribution of brochures, or on-site visits.

Information disclosure assistance measures for vulnerable groups include in home interviews, face-to-face interviews, and providing appropriate information material formats. All publicly available information must be well documented, and feedback and suggestions received must be recorded and archived. The template for information disclosure records is shown in Table 5-2

**Table 5-2 Information Disclosure Record Template**

Disclosed Information	Location	Method	Target stakeholders	Comments and feedback received	Agencies responsible

### 5.3 Stakeholder engagement plan

At different stages of the construction subprojects, the PMO and PIU will conduct meaningful stakeholder engagement activities. Meaningful engagement is a two-way process that should:

- begin early on during project planning, collect preliminary comments on the Project, and affect the project design;
- encourage stakeholders to give feedback, especially as a way to affect the project design, and involve stakeholders in identifying and mitigating E&S impacts and risks;
- be conducted continuously with the emergence of impacts and risks;
- disclose and disseminate relevant, transparent, objective, meaningful and readily available information in advance in order to conduct meaningful consultation with stakeholders in a culturally appropriate manner, using the local language and in a form understood by them within a timeframe;
- consider and respond to feedback;
- support the extensive participation of all project-affected parties;
- be gender inclusive and suitable for the needs of vulnerable groups;

- be able to incorporate all relevant perspectives of directly affected individuals and other stakeholders into project implementation activities;
- And be free from external manipulation, interference, intimidation, and discrimination.

### **5.3.1 Main content of Stakeholder Consultation**

The PIU will conduct stakeholder engagement activities at the preparation, construction and operation stages, and the depth and breadth of the SEP will depend on the scale and complexity of E&S impacts.

In various project stages, the engagement of different stakeholders should vary. To prevent the exclusion of these groups from mainstream consultation procedures, special approaches should be employed for vulnerable groups Refer to Table 5-3 Stakeholder Engagement Plan for the details.

- For different types of laborers, including contract workers and direct workers in the operation stage, consultations are focused on LMP (including GRM). We aim to understand their demands, improve GRM, and monitor the implementation of LMP in the construction stage and operation stage, including the grievance resolution process.
- In regard to the surrounding communities and residents (including 60 Zhuang residents), the focus is on understanding their views and demands regarding the impact of the Project's construction and operation. We aim to improve community GRM and monitor the Project's effect on the surrounding area, the attitudes of community residents, and the handling of grievances by community residents.
- Concerning the impact on village collectives and villagers affected by LA (including 11 Zhuang individuals), it's essential to engage in full consultation with the affected village collectives and villagers. Timely and full payments should be made according to LA and resettlement agreements. For relocated households, resettlement should proceed promptly according to the agreement. Additionally, it's crucial to collect and address complaints and issues promptly.
- To minimize the negative impacts of LA and HD and systematically ensure the restoration and improvement of living standards for the project-affected people, the project has formulated a detailed livelihood restoration plan. To ensure the plan genuinely meets public needs and is practical, the project implementing unit and the Land and Housing Expropriation Center of Qinbei District will engage in comprehensive and in-depth consultations with the affected villages/communities and villagers before the formal implementation of LA and HD activities. The consultations will adhere to the principles of openness, participation, and inclusiveness. Discussions will focus on livelihood restoration support methods, including continuing land cultivation, skills training, priority employment in the industrial park, and pension security for farmers who have lost their land, to help the project-affected people restore and improve their livelihoods. By fully considering all opinions and jointly refining the livelihood restoration plan, it can be effectively ensured that the livelihoods and living standards of the project-affected people will reach or exceed pre-project levels.

### **5.3.2 Main Methods of Stakeholder Consultation**

According to different target stakeholders, different methods will be adopted, including:

- Interview with key informants;
- Seminar/Focus Group Discussion;
- Social questionnaire survey;
- Household interviews;
- Online public consultation for opinions;
-

The consultation with stakeholders of the project includes the preparation phase, implementation phase, and operation phase of the project. The proposed stakeholder engagement plan is detailed in Table 5-3.

All public consultations and participation, as well as their findings, suggestions, etc., will be recorded. The template for public participation records is detailed in Table 5-4

**Table 5-3 Stakeholder Engagement Program**

Stage	Participation Content	Topic	Target group	Participation time	Participation method	Implementing unit
<p><b>Project preparation phase (including project design)</b></p>	<p>Project Environmental and Social Impact Assessment and Stakeholder Participation</p>	<p>Publicize basic project information; Identify project stakeholders; Investigation of environmental and social sensitive points; Collect residents' expectations and opinions on environmental and social aspects; Answer residents' questions.</p>	<p>PMO, Qinzhou Huangma Asset Management Group Co., Ltd, relevant government agencies in Qinbei District, Qinbei District Ethnic and Religious Affairs Bureau, Qinbei District Housing and Land Acquisition Center, affected villages/communities under the jurisdiction of Changtian Street and Dadong Town in Qinbei District (Huangma Community, Longwan Community, Chengbei Community, Hengling Village, Jiangbiao Community), as well as residents of surrounding villages/communities, including women, EMs, the elderly, people with disabilities, low-income populations, school teachers and</p>	<p>2024.2-2025.11</p>	<p>Seminars, focus group discussions, interviews with key informants, questionnaire surveys, field investigations, and data collection</p>	<p>PMO, Qinzhou Huangma Asset Management Group Co., Ltd, relevant government agencies in Qinbei District, Changtian Street Office, Dadong Town Government, community/village (residential) committees (Huangma Community, Longwan Community, Chengbei Community, Hengling Village, Jiangbiao Community) and surrounding villages/communities</p>

Stage	Participation Content	Topic	Target group	Participation time	Participation method	Implementing unit
	Environmental and Social Impact Assessment	<p>There are environmentally sensitive areas such as basic farmland, natural forests, public welfare forests, and water source protection areas near the location of the Entrance trunk road. The project route should try to avoid these sensitive areas as much as possible; There are abundant species of wild animals and plants within the project's scope; Highways and railways have increased the number of culverts to serve as pathways for wildlife on both sides and to mitigate the impact of project barriers; The selection of green tree species should try to consider tree species that are</p>	<p>students, etc</p> <p>PMO, Qinzhou Huangma Asset Management Group Co., Ltd, relevant government agencies in Qinbei District, affected villages/communities under the jurisdiction of Changtian Street and Dadong Town in Qinbei District (Huangma Community, Longwan Community, Chengbei Community, Hengling Village, Jiangbiao Community), as well as residents of surrounding villages/communities, including women, EMs, the elderly, people with disabilities, low-income populations, school teachers and students, etc</p>	2024.2-2025.11	Key informant interviews, focus group discussions, seminars, and public announcements	<p>PMO, Qinzhou Huangma Asset Management Group Co., Ltd, project design unit, environmental and social consultant, Changtian Street Office, Dadong Town Government, community/village (residential) committees (Huangma, Longwan Community, Chengbei Community, Hengling Village, Jiangbiao Community) and surrounding villages/communities</p>

Stage	Participation Content	Topic	Target group	Participation time	Participation method	Implementing unit
		suitable for the climate characteristics of the area, adopt a mixed planting form of multiple species, and avoid the formation of large-scale single species planting for greening; There is one Tudimiao relocation issue reported by villagers within the scope of land acquisition impact of the project;				
	Participate in and negotiate to improve the design proposal	Encourage residents to provide their opinions and suggestions on relevant design content during the scheme design process; After the preliminary design of the plan is completed, the PMO should publicize the plan in the project village and collect residents' opinions and suggestions.	PMO, Qinzhou Huangma Asset Management Group Co., Ltd, relevant government agencies in Qinbei District, Qinbei District Ethnic and Religious Affairs Bureau, Qinbei District Women's Federation, Qinbei District Housing and Land Acquisition Center, affected villages/communities under the jurisdiction of Changtian Street	2026.3-2026.4	Resident interviews, symposiums, and public announcements	PMO, Qinzhou Huangma Asset Management Group Co., Ltd, Qinbei District Ethnic and Religious Affairs Committee, Qinbei District Housing and Land Acquisition Center, project design unit, environmental and social consultant, Changtian Street Office, Dadong Town Government, community/village (residential) committees (Huangma, Longwan Community, Chengbei Community, Hengling

Stage	Participation Content	Topic	Target group	Participation time	Participation method	Implementing unit
		Optimization has been carried out for identified environmental and social risks and identified issues, and effective mitigation measures have been developed.	and Dadong Town in Qinbei District (Huangma Community, Longwan Community, Chengbei Community, Hengling Village, Jiangbiao Community), as well as residents of surrounding villages/communities, including women, EMs, the elderly, people with disabilities, low-income populations, etc			Village, Jiangbiao Community) and surrounding villages/communities
	House demolition and land compensation	<p>Confirm the land occupation situation;</p> <p>Publish a collection announcement;</p> <p>Publish the compensation plan for expropriation and demolition resettlement;</p> <p>The village (neighborhood) committee shall negotiate with residents to confirm the content and</p>	Affected villages/communities (Huangma Community, Longwan Community, Chengbei Community, Hengling Village, Jiangbiao Community) under the jurisdiction of Changtian Street and Dadong Town in Qinbei District are affected by land acquisition and demolition, including women, EMs, the	2026.4-2028.6	Post notices and negotiate with residents (household interviews, symposiums)	PMO, Qinzhou Huangma Asset Management Group Co., Ltd, Qinbei District Natural Resources Bureau, Qinbei District Housing and Land Acquisition Center, Changtian Street Office, Dadong Town Government, Community/Village (Neighborhood) Committees (Huangma Community, Longwan Community, Chengbei Community, Hengling Village, Jiangbiao

Stage	Participation Content	Topic	Target group	Participation time	Participation method	Implementing unit
		method of compensation; Provide livelihood restoration measures; The neighborhood committee signs relevant agreements with residents and compensates them according to the requirements of the agreement;	elderly, people with disabilities, and low-income population			Community) and surrounding villages/communities
	Livelihood Restoration Plan Consultation	Publicize and jointly discuss the specific content of the livelihood restoration plan, including: the plan for continuing land cultivation, the direction and types of skills training, specific positions and conditions for prioritized employment in the industrial park, and the pension security scheme for farmers who have lost land; Solicit opinions and preferences from the project-affected	Affected villages/communities (Huangma Community, Longwan Community, Chengbei Community, Hengling Village, Jiangbiao Community) under the jurisdiction of Changtian Street and Dadong Town in Qinbei District are affected by land acquisition and demolition, including women, EMs, the elderly, people with disabilities, and low-income population	2026.4-2028-6	Consultation meetings (village-level forums, household representative meetings), household interviews and needs surveys, plan publicity, focus group discussions, etc.	PMO, Qinzhou Huangma Asset Management Group Co., Ltd, Qinbei District Natural Resources Bureau, Qinbei District Human Resources and Social Security Bureau, Qinbei District Women's Federation, Qinbei District Ethnic and Religious Affairs Bureau, Qinbei District Housing and Land Acquisition Center, Changtian Street Office, Dadong Town Government, Community/Village (Neighborhood) Committees (Huangma Community, Longwan

Stage	Participation Content	Topic	Target group	Participation time	Participation method	Implementing unit
		people regarding livelihood restoration measures, and jointly determine the support methods that best suit actual needs; Communicate and reach consensus on the plan's implementation steps, schedule, and eligibility criteria.				Community, Chengbei Community, Hengling Village, Jiangbiao Community) and surrounding villages/communities8
	Publication of Grievance Submission Channels	Publish the project implementation supervision hotline at an appropriate location and establish a long-term effective appeal mechanism;  Regarding the relevant issues raised by residents during the project implementation process, we will handle the appeals raised through various channels such as on-site appeals, letters, and phone calls, and provide on-site	affected villages/communities under the jurisdiction of Changtian Street and Dadong Town in Qinbei District (Huangma Community, Longwan Community, Chengbei Community, Hengling Village, Jiangbiao Community), as well as residents of surrounding villages/communities, including women, EMs, the elderly, people with disabilities, low-income populations, etc	2026.2-2031.12	Television, radio, posting notices, distributing flyers, village meetings, village committee notifications, internet	PMO, Qinzhou Huangma Asset Management Group Co., Ltd, Relevant management departments of Qinbei District Government, Changtian Street Office, Dadong Town Government, Community/Village (Neighborhood) Committees (Huangma Community, Longwan Community, Chengbei Community, Hengling Village, Jiangbiao Community) and surrounding villages/communities

Stage	Participation Content	Topic	Target group	Participation time	Participation method	Implementing unit
		<p>notification. If we cannot provide on-site notification, we should give a response within 15 days;</p> <p>And pay attention to listening to the opinions of vulnerable groups such as women and low-income groups, ensuring the openness, fairness, and transparency of project implementation.</p>				
<p><b>Project construction phase</b></p>	<p>Public participation and consultation activities</p>	<p>Publicly disclose the construction schedule and progress plan;</p> <p>Understand residents' views and opinions on project construction, complaints and grievances, etc</p>	<p>Affected villages/communities under the jurisdiction of Changtian Street and Dadong Town in Qinbei District (Huangma Community, Longwan Community, Chengbei Community, Hengling Village, Jiangbiao Community), as well as residents of surrounding villages/communities, including women,</p>	<p>Project construction period</p>	<p>Posting notices, hanging promotional slogans, broadcasting, etc. on the bulletin boards of residents' congresses and village committees</p>	<p>PMO, Qinzhou Huangma Asset Management Group Co., Ltd, Qinbei District Natural Resources Bureau, Qinbei District Housing and Land Acquisition Center, Changtian Street Office, Dadong Town Government, Community/Village (Neighborhood) Committees (Huangma Community, Longwan Community, Chengbei Community, Hengling Village, Jiangbiao</p>

Stage	Participation Content	Topic	Target group	Participation time	Participation method	Implementing unit
			EMs, the elderly, people with disabilities, low-income populations, school teachers and students, etc			Community) and surrounding villages/communities
	Labor and working conditions and safety and health	<p>The implementation status of the contractor's environmental and social management plan, including:</p> <p>Labor rights protection, construction safety management, public health, AIDS and other infectious diseases publicity, and include them in the contract documents;</p> <p>Strengthen the publicity and education of external personnel on the local social culture and traditional customs of the project area.</p> <p>Ensure hygiene facilities for female workers on</p>	PMO, Qinzhou Huangma Asset Management Group Co., Ltd, all project construction personnel	Project construction period	Posting information such as Website of Qinzhou Huangma Asset Management Group Co., Ltd., labor management procedures, safety operating procedures, health tips, brochures, and worker meetings/team meetings through bulletin boards or publicity boards on the website of the executing agency and construction camps	PMO, Qinzhou Huangma Asset Management Group Co., Ltd, contractors, supervisors

Stage	Participation Content	Topic	Target group	Participation time	Participation method	Implementing unit
		<p>construction sites, etc.;</p> <p>The construction unit should strengthen the supervision of the construction site (to avoid harmful behaviors such as gender violence, sexual exploitation and abuse, sexual harassment, etc.);</p> <p>We should establish appeals and complaints, promptly record and provide feedback, and resolve them.</p>				
	Community Health and Safety	<p>The views, opinions, and suggestions of surrounding communities/village residents on the potential environmental and social risks and impacts of the project construction (including appeal handling and record keeping); Carry out publicity and training</p>	<p>Affected villages/communities under the jurisdiction of Changtian Street and Dadong Town in Qinbei District (Huangma Community, Longwan Community, Chengbei Community, Hengling Village, Jiangbiao Community), as well as residents of</p>	Project construction period	<p>Publicize project QQ/WeChat work groups through community/village bulletin boards, community meetings, distributing brochures, or on-site visits</p>	<p>PMO, Qinzhou Huangma Asset Management Group Co., Ltd, construction unit, supervisor, Changtian Street Office, Dadong Town Government, community/village (residential) committees (Huangma Community, Longwan Community, Chengbei Community, Hengling Village, Jiangbiao Community) and surrounding</p>

Stage	Participation Content	Topic	Target group	Participation time	Participation method	Implementing unit
		related to traffic safety. Special attention should be paid to the proportion of women and vulnerable groups participating in lectures	surrounding villages/communities, including women, EMs, the elderly, people with disabilities, low-income populations, school teachers and students, etc			villages/communities
	Participate in project construction	Determine the positions that the project construction can provide; Determine the selection criteria for personnel involved in project construction, and prioritize providing positions to impoverished households and women; Determine the salary for participating in project construction, as well as the technical training and safety system training for the personnel involved in the construction.	Affected villages/communities under the jurisdiction of Changtian Street and Dadong Town in Qinbei District (Huangma Community, Longwan Community, Chengbei Community, Hengling Village, Jiangbiao Community), as well as residents of surrounding villages/communities, including women, EMs, the elderly, people with disabilities, low-income populations, etc	Project construction period	Government website, bulletin board posting, villagers' assembly, WeChat official account and other platforms	PMO, Qinzhou Huangma Asset Management Group Co., Ltd, construction unit, supervisor, Changtian Street Office, Dadong Town Government, community/village (residential) committees (Huangma Community, Longwan Community, Chengbei Community, Hengling Village, Jiangbiao Community) and surrounding villages/communities, contractors

Stage	Participation Content	Topic	Target group	Participation time	Participation method	Implementing unit
	Institutional Capability Training	Conduct training on project management, contract management and changes, financial management and withdrawal reimbursement, environmental and social management plans, land acquisition and demolition resettlement, and external monitoring	PMO, Qinzhou Huangma Asset Management Group Co., Ltd, construction units, contractors, supervisors of relevant government departments at all levels in Qinbei District, Changtian Street Office, Dadong Town Government, community/village (residential) committees (Huangma Community, Longwan Community, Chengbei Community, Hengling Village, Jiangbiao Community) and surrounding villages/communities	Project construction period	Online and offline training	Project Consulting Management Team
<b>Operation phase</b>	Labor and working conditions and safety and health	The implementation of environmental and social management plan by operational management agencies, including:  Labor rights protection,	Qinzhou Huangma Asset Management Group Co., Ltd. in Qinzhou, all project workers during the operation period	Project operation phase	Post information such as labor management procedures, health tips, brochures, and promotional meetings on Huangma's official website, bulletin board, and bulletin board in Qinzhou	PMO, Qinzhou Huangma Asset Management Group Co., Ltd, suppliers

Stage	Participation Content	Topic	Target group	Participation time	Participation method	Implementing unit
		<p>construction safety management, public health, AIDS and other infectious diseases publicity, and include them in the contract documents;</p> <p>Conduct knowledge dissemination and training on preventing gender based violence, sexual exploitation and abuse, sexual harassment, etc. for employees;</p> <p>A GRM should be established to promptly record and provide feedback, and resolve issues.</p>				
	Community Health and Safety	The views, opinions, and suggestions of surrounding community/village residents on the environmental and social risks and impacts during the project operation period (including appeal handling and	Residents of affected villages/communities (Huangma Community, Longwan Community, Chengbei Community, Hengling Village, Jiangbiao Community) under Changtian Street and Dadong Town in	Project operation phase	Street/township governments, village committee bulletin boards, village meetings, distributing brochures or conducting on-site visits, conducting knowledge lectures, and other methods	PMO, Qinzhou Huangma Asset Management Group Co., Ltd, Changtian Street Office, Dadong Town Government, Community/Village (Neighborhood) Committees (Huangma Community, Longwan Community, Chengbei Community, Hengling

Stage	Participation Content	Topic	Target group	Participation time	Participation method	Implementing unit
		record keeping); Carry out publicity and training related to traffic safety. Special attention should be paid to the proportion of women and vulnerable groups participating in lectures	Qinbei, as well as surrounding villages/communities, including women, EMs, the elderly, people with disabilities, low-income populations, school teachers and students, etc			Village, Jiangbiao Community) and Surrounding Villages/Communities
	Participate in project construction	The positions that project operations can provide;  Determine the selection criteria for personnel involved in project construction, and prioritize providing them to low-income groups and women;  Determine the salary of workers involved in project operation, as well as the technical training and safety system training for personnel involved in construction.	Residents of affected villages/communities (Huangma Community, Longwan Community, Chengbei Community, Hengling Village, Jiangbiao Community) under Changtian Street and Dadong Town in Qinbei, as well as surrounding villages/communities, including women, EMs, elderly, disabled, low-income population, etc	Project operation phase	Government website, bulletin board posting, villagers' meeting, QQ/WeChat work group notice, recruitment website and WeChat official account, etc	PMO, Qinzhou Huangma Asset Management Group Co., Ltd, Changtian Street Office, Dadong Town Government, Community/Village (Neighborhood) Committees (Huangma Community, Longwan Community, Chengbei Community, Hengling Village, Jiangbiao Community) and Surrounding Villages/Communities

Stage	Participation Content	Topic	Target group	Participation time	Participation method	Implementing unit
	Institutional Capability Training	Conduct capacity building training for project operation staff	PMO, Qinzhou Huangma Asset Management Group Co., Ltd, and relevant management departments of Qinbei District Government	Project operation phase	Online and offline training	Project Consulting Management Team
	Problem and Solution	Exploring solutions to environmental and social issues that have been discovered or emerged	Residents of affected villages/communities (Huangma Community, Longwan Community, Chengbei Community, Hengling Village, Jiangbiao Community) under Changtian Street and Dadong Town in Qinbei, as well as surrounding villages/communities, including women, EMs, the elderly, people with disabilities, low-income populations, school teachers and students, etc	Project operation phase	Television, radio, internet, telephone hotline, appeal reception room, interviews, questionnaire surveys (such as public satisfaction), symposiums, etc	Qinzhou Huangma Asset Management Group Co., Ltd. in Qinzhou, relevant management departments

**Table 5-4 Participation of vulnerable groups**

Phase	Engagement Activity	Topic / Issue	Target Group	Time	Methods	PIU
Project Preparation	Project Information Campaign	Ensuring vulnerable groups understand the project's content and potential impacts.	The Elderly, Women, Low-Income Populations, EMs	2024.2-2025.11	Door-to-door communication, radio broadcasts, community meetings, public notice boards	PMO, Qinzhou Huangma Asset Management Group Co., Ltd., Changtian Sub-district Office, Dadong Town Government, Community/Village Committees, Environmental and Social Consultants, Feasibility Study Unit
	Consulting Vulnerable Groups	Collecting opinions and expectations regarding project design, land acquisition, resettlement, employment, etc.	Women, The Elderly, Low-Income Families, EMs	2024.5-2025.9	Focus group discussions, interviews, questionnaire surveys	PMO, Qinzhou Huangma Asset Management Group Co., Ltd., Women's Federation, Bureau of Civil Affairs, Ethnic and Religious Affairs Bureau, Community/Village Committees
	E&S Risk Communication	Discussing risks (e.g., noise, dust, vibration, health) and mitigation measures.	Children, Parents of Students, Women, The Elderly, EMs	2024.5-2025.9	Community notice boards, interviews, meetings, questionnaire surveys	PMO, Qinzhou Huangma Asset Management Group Co., Ltd., Environmental and Social Consultants
Project Construction	Construction Information & Safety Notification	Preventing risks during construction (traffic, noise, safety); Publicizing job vacancy information.	Children, Students, The Elderly, Women, EMs, Low-Income Populations	Project Construction Period	Posted notices, radio broadcasts, community bulletin boards, school safety	PMO, Qinzhou Huangma Asset Management Group Co., Ltd., Contractors, Community/Village Committees, Schools

Phase	Engagement Activity	Topic / Issue	Target Group	Time	Methods	PIU
					education	
	Mitigation Measure Communication	Collecting feedback on dust/noise/vibration/traffic measures for timely adjustments; Regular safety and disease prevention awareness campaigns.	The Elderly, Women, EMs, Low-Income Groups	Project Construction Period	Regular meetings, door-to-door follow-up visits, questionnaire surveys, published hotline numbers	PMO, Qinzhou Huangma Asset Management Group Co., Ltd., Contractors, Changtian Sub-district Office, Dadong Town People's Government, Community/Village Committees
	Promotion of GRM	Establishing accessible channels to ensure timely response.	All Vulnerable Groups	Project Construction Period	Hotlines (12345/12369/12338), notice boards, community info sessions, grievance registration	PMO, Qinzhou Huangma Asset Management Group Co., Ltd., Qinbei District Government Supervisory Bodies, Community/Village Committees
	Protection of Female Workers' Rights	Preventing gender-based violence; Ensuring OHS and equal employment.	Female Workers, Women's Representatives	Project Construction Period	OHS training, gender equality awareness, equal pay monitoring	Qinzhou Huangma Asset Management Group Co., Ltd. (PIU), Contractors, Women's Federation
Project Operation	E&S Impact Feedback	Monitoring operational impacts (noise, vibration, air quality, traffic safety)	All Vulnerable Groups, especially the	Project Operation Period	Public disclosure of noise/vibration monitoring	PMO, Qinzhou Huangma Asset Management Group Co., Ltd., Changtian Sub-district Office, Dadong

Phase	Engagement Activity	Topic / Issue	Target Group	Time	Methods	PIU
		to ensure mitigation effectiveness.	elderly and women in villages affected by noise/vibration		results, community meetings	Town Government, Environmental Impact Assessment Unit
	Employment & Skills Training	Releasing job vacancies; Providing prioritized skills training and employment opportunities.	Low-Income Populations, Women, EMs	Project Operation Period	Vocational skills training, specialized job fairs	PMO, Qinbei District Bureau of Human Resources and Social Security, Community/Village Committees
	Operation of GRM	Ensuring issues can be reported and addressed promptly during operation.	All Vulnerable Groups	Project Operation Period	Hotlines (12345/12369), regular follow-up visits, grievance registration forms	PMO, Community/Village Committees

**Table 5-5 Public Participation Record Template**

Date	Location	Activity	Method	Participants	Agencies responsible	Findings, suggestions and subsequent actions

### 5.4 Timetable

Different project stages have different decisions, and it is crucial to complete them within the specified time. At present, the project has not yet developed a detailed implementation plan and schedule (including timetable). Correspondingly, the schedule for stakeholder engagement in the project cannot be determined yet. Table 5-6 lists the main time nodes for project information release and feedback.

**Table 5-6 Important decision-making schedule for stakeholders**

Project Phase	Important decisions and information	Deadline	Remarks
Preparation stage	Project information (mainly including project nature, scale, duration, etc.) SEP, ESIA, ESMP, RP and others	March 31, 2026	
implementation phase	Project implementation progress information, implementation status of environmental and social measures, appeals and handling, project performance and environmental and social monitoring reports	During the project implementation period, the internal monitoring report is included in the project progress report as part of the project progress report, and it is reported and submitted quarterly. The external monitoring report is reported quarterly in the first year during the project implementation period, and semi-annually from the second year after the AIIB is evaluated and agreed.	In case of sudden ES incidents, immediate reporting and emergency response measures must be taken.
Operation phase	Project operation status, grievance records, project performance, and environmental and social monitoring reports	June 30th every year; December 31st every year	

### 5.5 Review of Comments

Throughout the entire project cycle, as project information becomes clear, Qinzhou Huangma Asset Management Group Co., Ltd will communicate and confirm key environmental and social issues with relevant government departments based on the nature and characteristics of the subprojects, and carry out corresponding consultation and negotiation activities as early as possible.

For relevant comments and suggestions from stakeholders: The Qinzhou Huangma Asset

Management Group Co., Ltd will record all comments and suggestions of stakeholders, and those adopted will be described in semiannual E&S environmental monitoring reports, and disclosed to the public through appropriate means.

For suggestions from stakeholders at the project preparation stage: The Qinzhou Huangma Asset Management Group Co., Ltd will consider suggestions raised at the preparation stage in the design process to make the project design more suited to their needs; for suggestions raised at the construction and operation stages, the PIU will communicate with stakeholders to find the most effective solutions.

In response to stakeholder concerns raised during the project's construction and operational phases, Qinzhou Huangma Asset Management Group Co., Ltd. will engage in full communication with stakeholders throughout subsequent implementation and operation. Through multi-stakeholder consultation, the most effective and feasible solutions will be selected to promote the project's E&S sustainability.

## **5.6 Future Stages of the Project**

As the project progresses, the PMO, PIU, contractors, etc. will follow SEP to release and provide feedback on information, negotiate with stakeholders, and operate the GRM.

Qinzhou Huangma Asset Management Group Co., Ltd will communicate with stakeholders (including Zhuang residents) according to the relevant activities formulated in SEP, and disclose project information (including project content, construction information, environmental and social environmental management documents such as ESIA, ESMP, SEP, RP, etc.), as well as GRM to stakeholders.

In the implementation period, Qinzhou Huangma Asset Management Group Co., Ltd will prepare an internal environmental and social performance monitoring report as part of the progress reports and will submit the reports quarterly; during the implementation period, the report will be submitted quarterly in the first year. After being evaluated and approved by the AIIB, the report will be submitted every six months starting from the second year, and will be made public to the public through different means. In the event of major changes during project implementation or operation, Qinzhou Huangma Asset Management Group Co., Ltd will promptly inform stakeholders through the designated information disclosure and public consultation channels. The company will provide clear communication regarding related E&S impacts, guaranteeing adequate public awareness and engagement in follow-up decision-making processes.

## 6 Grievance Mechanism

In the process of project preparation, construction, and operation, in order to timely understand and solve the impact and problems of the project on stakeholders, ensure the residents' demand for information disclosure and the widest possible participation of stakeholders (including Zhuang individuals), combined with the current situation of residents' complaints and grievances in the project area, a project level complaint mechanism will be established. The establishment of this appeal and complaint mechanism can express concerns about problems or dissatisfaction that arise during the project execution process and seek fair solutions; timely identify and solve problems in project implementation, and promote continuous optimization of project management and execution. And through an open and transparent appeal handling process, enhance the credibility of the project, and strengthen public understanding and support for the project. All appeal records and resulting resolutions will be recorded and reported to the AIIB through the Environmental and Social Management Plan monitoring report.

The GRM for the project mainly includes two types:

The first type is the project-level grievance mechanism, which provides a channel for complaints from affected residents, social groups, enterprises, business entities, and other stakeholders during the implementation and operation of the project.

The second is a Worker-Level Grievance Mechanism, which offers an effective channel for project workers, including direct workers, contractor workers, and supplier workers.

### 6.1 Grievance Redress Procedure

#### a. GRM Established for Project-affected People

The GRM has been established to promptly address and resolve adverse impacts arising from project implementation (such as construction noise, dust, waste disposal, etc.), and to effectively protect the social rights and interests of stakeholders. In accordance with relevant national regulations, including the Regulations on Letters and Visits implemented by the State Council in May 2022 and the Management Measures for Environmental Protection Hotline Reporting, the project has established accessible grievance channels for affected individuals. Project-affected people may submit opinions, suggestions, or complaints through information networks (e.g., official websites, email), written correspondence, telephone, fax, or in-person visits, ensuring their legitimate appeals are promptly reported and addressed.

Upon receiving a complaint, the head of the PMO should first verify whether the complaint is related to the project. If the complaint is project-related, the head should initiate coordination to resolve the issue, regardless of whether it concerns environmental, social, or other issues. If the complaint is unrelated to the project, the head should submit the complaint to the relevant authorities. All complaints should be recorded, and the entire process should be communicated to the relevant parties. The basic steps and time framework for the grievance mechanism are as follows:

**Phase One (5 calendar days):** If the complainant is dissatisfied with land acquisition compensation and resettlement plans or with safety and environmental issues during the construction and operation periods, they may file a complaint orally or in writing to the village committee of the project area or the contractor. If the complaint is made orally, the village committee or contractor should make a written record. The village committee or contractor should: (1) immediately request the complained party to stop the relevant activity (e.g., noise impact from construction on nearby residents); (2) prevent the complained party from resuming activities until the complaint is resolved; (3) immediately report the complaint content and proposed solution to Qinzhou Huangma Asset Management Group Co., Ltd.; (4) provide a clear response to the affected party within two days; (5) resolve the issue, if

possible, within five days of receiving the complaint.

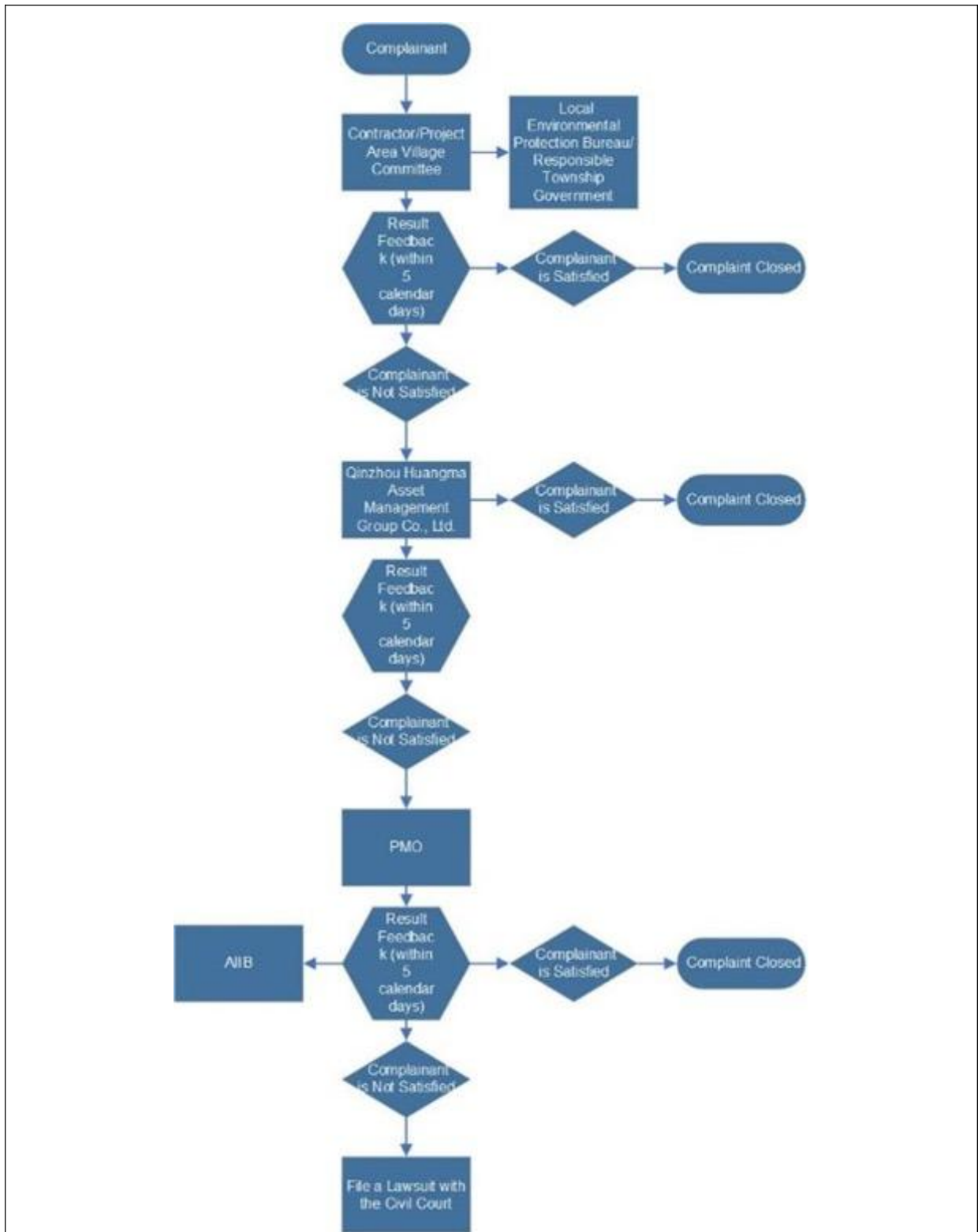
The contractor should inform Qinzhou Huangma Asset Management Group Co., Ltd. at all stages. After receiving notification from the contractor, Qinzhou Huangma Asset Management Group Co., Ltd. should notify the PMO, the township government, and Ecology and Environment Bureau, etc., within one working day. Subsequently, these parties will be informed at all stages.

**Phase Two (5 calendar days):** If the issue cannot be resolved in Phase One, after five calendar days, Qinzhou Huangma Asset Management Group Co., Ltd. will take over the responsibility. Qinzhou Huangma Asset Management Group Co., Ltd. will: (1) retrieve the original complaint record and within two days, organize a meeting with key stakeholders (including the complained party, complainant) to develop an acceptable solution with clear steps to resolve the issue; (2) the complained party should immediately implement the resolution and solve the issue within three days. All measures and results should be documented.

If the solution is agreed upon by the complainant, the contractor and/or facility operator (during operation) will implement the solution within five calendar days after Qinzhou Huangma Asset Management Group Co., Ltd. takes over the complaint responsibility. All stages and results will be documented in writing. At the end of Phase Two, Qinzhou Huangma Asset Management Group Co., Ltd. (PIU) will notify the project management office of the result.

**Phase Three (15 calendar days):** If Qinzhou Huangma Asset Management Group Co., Ltd. cannot determine a solution, and/or the complainant is dissatisfied with the proposed solution, the project management office will organize a stakeholders' meeting (including the complainant, the complained party, local departments such as the Natural Resources and Planning Bureau, the Relocation Office, the Human Resources and Social Security Bureau, Women's Federation, Agriculture and Rural Affairs Bureau, Ecology and Environment Bureau, Water Resources Bureau, Forestry Bureau, and other relevant departments) within seven calendar days to determine a mutually acceptable solution with clear steps. The contractor (during construction) and facility operator (during operation) will immediately implement the agreed-upon solution. Every effort should be made to resolve the issue completely within 15 calendar days. All stages and results will be documented. At the end of Phase Three, the project management office will report the results to the Asian Infrastructure Investment Bank (AIIB).

**Phase Four:** If the complainant is still dissatisfied with the decision made in the previous phases, they may, within the time specified after receiving the decision, file a lawsuit in a civil court according to the "Civil Procedure Law of the People's Republic of China."



**Figure 8-1: Complaint Mechanism Workflow**

**b. GRM Established for Workers**

A separate grievance handling center will be established to handle complaints raised by workers working on construction sites to contractors. These complaints include issues related to wages, overtime pay, timely wage payments, accommodation, or facilities related to drinking water, sanitary conditions, and medical services.

In the management of Gender-Based Violence (GBV), Qinzhou Huangma Asset Management Group Co., Ltd. will rely on the guidance and coordination of the Project Management Office and the Women’s Federation of Qinbei District. During project implementation or operation, the project implementation agency, contractors, etc., shall, in accordance with the "Law of the People’s Republic of China on the Protection of Women’s Rights and Interests," "Special Provisions on the Labor Protection of Female Workers," "Regulations on the Health Care of Female Workers," "Special Labor Protection System for Female Workers in the Workplace (Reference Text)," and "Regulation on Eliminating Sexual Harassment in the Workplace (Reference Text)" and other laws and regulations, sign labor (employment) contracts with female workers, ensure equal pay for equal work, and take effective measures such as appointing a special officer to protect women’s rights to prevent and stop sexual harassment in the workplace.

Additionally, a rapid response mechanism will be established for female workers and women in the project area to lodge complaints or suggestions related to GBV. If female workers experience sexual harassment or any other behavior that endangers their personal safety in the workplace, the victim can immediately report or file a complaint to the employer, local Women’s Federation, Women’s Workers Committee, or dial the "12338" Women’s Rights Protection Public Service Hotline. The employer should handle the issue promptly and legally protect the rights of female workers.

In addition, the Asian Infrastructure Investment Bank (AIIB) has established a feedback mechanism for people affected by the project (PPM). When project-affected people believe that the AIIB project has failed to implement its Environmental and Social Policy (ESP) and is or may cause adverse impacts on them, and their concerns cannot be satisfactorily resolved through the project’s grievance redress mechanism (GRM) or the AIIB management system, the PPM provides an independent and fair review opportunity. Information related to the PPM can be accessed via the following link: <https://www.aiib.org/en/about-aiib/who-we-are/project-affected-peoples-mechanism/how-we-assist-you/index.html>

## 6.2 Record and Track on Grievance Feedback and Resolution

During the implementation of the project, all points of entry for the complaint mechanism must properly register and manage complaint data and handling results, reporting them in writing to Qinzhou Huangma Asset Management Group Co., Ltd. once a month. Qinzhou Huangma Asset Management Group Co., Ltd. will regularly review the registration of complaint handling and ensure timely communication with the project management office regarding handling progress, reaching consensus on suggestions.

To comprehensively document grievances submitted by project-affected persons (PAPs) and the resolution of related matters, the Project Management Office (PMO) has formulated a Project-Affected Persons’ Grievance Registration Form. The Project permits grievants to submit grievances anonymously, and the form template is provided in Table 6-1.

**Table 6-1 Grievance Registration Form**

Unit			
Grievant			Contact information
Type			Time
Grievance Details:			

Results:	
Satisfaction:	
Person liable:	Contact information

Note: the project allows complainants to make anonymous appeals. Truthfully record and promptly resolve all appeal cases, and archive and manage them for future reference and statistical analysis

### 6.3 Grievance Contact Information

The EU will arrange for the main person in charge to be specifically responsible for receiving and handling the dissatisfaction and complaints of the affected population. The name, office address, and contact information of the confirmed person in charge are detailed in Table 6-2. After the bidding work is completed, the contractor and the supervisory unit need to confirm the environmental and social responsible person as the contact person for GRM.

**Table 6-2 Personnel Responsible for Grievance Handling**

No.	Place of work	Position	Name	Contact information	Remarks
1	Qinbei District Development and Reform Bureau (PMO Members)	Deputy Director	Chen Jianxian	0777-3686982	
2	Qinbei District Development and Reform Bureau (PMO Members)	Cadre	Liang Shengxin	0777-3686982	
3	Qinbei District NRB	Deputy Director	Wan Jingxiang	0777-2861615	
4	Qinzhou Huanhgma Asset Management Group Co., Ltd	Department manager	Wang Junying	0777-2558060	
5	Qinzhou Huanhgma Asset Management Group Co., Ltd (Full-time staff responsible for Social and Resettlement affairs)	Staff member	Wei Shaofang	0777-2558005	
6	Qinzhou Huanhgma Asset Management Group Co., Ltd (Full-time staff responsible for Social and Resettlement affairs)	Staff member	Liang Haoning	0777-2558017	
7	Qinbei District Housing and Land Acquisition Center	Deputy Director	Zhan Xu	18278184566	
8	Qinbei District Ethnic and Religious Affairs Bureau	Director	Wu Jun	13877777928	
9	Qinbei District Women's Federation	President	Zhou Qiuxia	13907870707	
10	Changtian Street Office	Recruiting and relocating officials	Huang Kaiyu	18907871158	
11	Huangma Community	Deputy Secretary of the Branch	Huang Guanghui	18977737905	
12	Chengbei Community	Branch Secretary	Zhang Jiahe	13197779190	
13	Longwan Community	Branch Secretary	Liang Jiahua	18977767519	
14	Dadong Town Government	Director of Relocation Office	Huang Yuntang	18077764323	

15	Hengling Village	Village branch secretary	Lin Siguang	13457727492	
16	Jiangbiao Community	Community branch secretary	Guo Jingzhi	13517770826	

Data source: PIUs

#### **6.4 Project-Affected People’s Mechanism (PPM)**

The PPM provides an independent and impartial review when project-affected people (including Zhuang residents) believe that an AIIB-funded project's failure to implement the Environmental and Social Policy (ESP) has caused, or is likely to cause, adverse impacts on them, and when their concerns cannot be resolved satisfactorily through the project-level GRM or AIIB management processes. Relevant information about the PPM can be accessed via the following link: <https://www.aiib.org/en/about-aiib/who-we-are/project-affected-peoples-mechanism/how-we-assist-you/index.html>

## 7 Resources and Responsibilities for Implementing Stakeholder Consultation Activities

### 7.1 Resources

By clarifying the resources and responsibilities of stakeholders, it can ensure the effective implementation of the SEP, as well as timely response to stakeholder concerns and complaints, thereby promoting the smooth implementation of the project.

**Project Coordination Committee (PCC):** Formed by decision of GZARG, the PCC integrates the QMG Steering Committee (led by a Vice Mayor) and the QDG Steering Committee (led by a Deputy District Chief). It provides high-level coordination to resolve cross-jurisdictional issues between municipal and district administrations.

**Project Management Office (PMO):** The Project Coordination Committee (PCC) has established a PMO. As designated by GZARG, the PMO will be jointly operated by the QDRC Director-led PMO and the QDDRБ Director-led PMO. The PMO's purpose is to centralize management and coordination for project preparation, implementation, monitoring, and evaluation. Its composition includes representatives from: Municipal People's Government, QDRC, Municipal Finance Bureau, Municipal Bureau of Natural Resources, Municipal Bureau of Ecology and Environment, District People's Government, QDDRБ, District Finance Bureau, District Bureau of Natural Resources, District Transport Bureau, District Water Resources Bureau, District Forestry Bureau, District Bureau of Ecology and Environment, District Expropriation Center and other relevant departments. The PMO will assume primary responsibility for coordinating the ESMP and must designate at least one E&S Officer to address environmental and social issues during project implementation.

**Project Implementation Unit (PIU):** GZARG has designated Qinzhou Huangma Asset Management Group Co., Ltd. as the PIU, responsible for the project's development, construction, ownership, and operation. Its duties include procurement, contract management, and oversight of technical consultants, procurement agents, and construction supervision companies. The PIU has established two full-time positions, responsible for environmental management and social and resettlement affairs respectively.

**Project Implementation Entity (PIE).** According to the definition of Project Implementation Entity (PIE) by the AIIB, the project will have four PIEs: the People's Government of Guangxi Zhuang Autonomous Region, the People's Government of Qinzhou City, the People's Government of Qinbei District, and Qinzhou Huangma Asset Management Group Co., Ltd..

Qinzhou Huangma Asset Management Group Co., Ltd. will coordinate and promote the construction of the project, having established two full-time positions responsible for environmental management and social affairs, respectively, including the implementation of SEP, complaint feedback and handling, and monitoring. At the same time, Qinzhou Huangma Asset Management Group Co., Ltd. has sufficient budget to carry out information disclosure and stakeholder participation work, ensuring sufficient and effective utilization of resources.

### 7.2 Roles and Responsibilities

According to the SEP, the PMO and Qinzhou Huangma Asset Management Group Co., Ltd. will clarify their respective roles and responsibilities to ensure effective stakeholder engagement and timely response to grievances.

Qinzhou Huangma Asset Management Group Co., Ltd. will hire an independent third-party monitoring agency to monitor and evaluate the implementation of project environmental and social related documents, and propose improvement suggestions and measures.

See details in table 7-1.

**Table 7-1 Roles and Responsibilities**

Organization	Roles and Responsibilities
Project Coordination Committee (PCC)	<p>Ensures timely coordination and support from national, Henan province, Zhengzhou city, and aviation port area institutions;</p> <p>Provides high-level support to the Project Management Office and offers advice on major issues during implementation;</p> <p>Ensures timely and effective execution of loan agreements;</p> <p>Coordinates with the Asian Infrastructure Investment Bank (AIIB).</p>
Project Management Office (PMO)	<p>Supervise and manage project implementation, and monitor quality control.</p> <p>Coordinate with the Asian Infrastructure Investment Bank (AIIB) on all aspects of project implementation.</p> <p>Handle daily management tasks during project preparation and implementation.</p> <p>Assign one Environmental and Social Specialist to the Project Management Office (PMO).</p> <p>Establish a grievance mechanism.</p> <p>Coordinate with AIIB on project progress and environmental and social monitoring reports, and submit these reports to AIIB for disclosure.</p> <p>Update the Environmental and Social Impact Assessment (ESIA) report and the Environmental and Social Management Plan (ESMP) as necessary, and submit the updated drafts to AIIB for approval.</p> <p>Disclose the environmental and social monitoring reports on the government website.</p>
Project Implementation Unit (PIU)	<p>Responsible for project implementation under the leadership of the PMO;</p> <p>Hire and manage design agencies, procurement agents, contractors, and supervision units according to government and AIIB regulations.</p> <p>Procure project implementation consulting services (PMC), including Loan Implementation Environmental Consultant (LIEC) and Loan Implementation Social Consultant (LSEC).</p> <p>Submit bidding documents, bid evaluation reports, and other required documents for AIIB review.</p> <p>Include the Environmental and Social Management Plan (ESMP) in the bidding documents.</p> <p>The PIU has established two full-time positions, responsible for environmental management and social and resettlement affairs respectively.</p> <p>Supervise and monitor the implementation of the Environmental and Social Management Plan.</p> <p>Participate in capacity building and training for the project.</p> <p>Responsible for construction supervision and quality control of the project.</p> <p>Hire external environmental and social monitoring agencies for environmental and social monitoring.</p> <p>Manage and maintain the operation of completed project facilities, including environmental and social management, monitoring, and reporting responsibilities.</p>

	<p>Support the update of the Environmental and Social Impact Assessment (ESIA) report and the Environmental and Social Management Plan (ESMP) as necessary.</p> <p>Disclose environmental and social monitoring reports on the Qinbei Government and Qinzhou Huangma Asset Management Group Co., Ltd. 's Wechat Public Platform.</p>
<p>Loan Implementation Environmental Consultant (LIEC) and Loan Social Consultant (LISC).</p>	<p>Assist in updating the Environmental and Social Impact Assessment (ESIA) report and the Environmental and Social Management Plan (ESMP) as needed.</p> <p>Supervise the implementation of mitigation measures specified in the Environmental and Social Management Plan (ESMP).</p> <p>On behalf of the Project Management Office (PMO), prepare Environmental and Social Management Plan monitoring and progress reports in English and submit them to AIIB.</p> <p>Provide training to the Project Management Office, Qinzhou Huangma Asset Management Group Co., Ltd. (PIU), and engineering contractors according to the training plan, covering topics such as China's environmental and social laws, regulations, and policies, AIIB's Environmental and Social Framework (ESF), implementation of the Environmental and Social Management Plan, and the Grievance Redress Mechanism (GRM).</p> <p>Identify any environmental and social implementation issues and propose necessary corrective actions.</p> <p>Conduct inspections of the Environmental and Social Management Plan as required.</p>
<p>External Environmental and Social Monitoring Agency (ESMA)</p>	<p>The certified agencies for external environmental and social monitoring.</p> <p>Check whether the project complies with the standards it is required to follow.</p> <p>Submit the testing reports to Qinzhou Huangma Asset Management Group Co., Ltd. (PIU), the Project Management Office, and AIIB.</p>
<p>Construction Contractor</p>	<ol style="list-style-type: none"> <li>1. Designate a Responsible Representative: The Contractor shall appoint a dedicated representative responsible for implementing the ESMP within their contracted scope, handling daily communication and coordination with relevant parties to ensure effective execution of all measures.</li> <li>2. Implement Mitigation Measures: The Contractor shall strictly implement all E&amp;S impact mitigation measures as required by the ESMP during project preparation, construction, and operation. This includes, but is not limited to, waste management, noise control, dust suppression, water and soil conservation, ecological protection, safe construction practices, social risk prevention, and emergency response.</li> <li>3. Ensure Gender Equality and Social Inclusion: The Contractor shall strictly enforce the GAP, actively support women's participation in the project, protect female workers' rights, and prevent gender-based violence, sexual discrimination, and harassment.</li> <li>4. Facilitate Information Disclosure and Public Participation: The Contractor shall cooperate with the Project Management Unit in information disclosure efforts, support and participate in public engagement and feedback activities within communities along the project route, and promptly address social concerns.</li> <li>5. Establish an Effective GRM: The Contractor shall establish a functional GRM for both project workers and project-affected people, ensuring all</li> </ol>

	<p>stakeholders have unobstructed channels to voice opinions and concerns, which are then processed, responded to, and documented promptly as required.</p> <p>6. Conduct Employee Training and Capacity Building: The Contractor shall provide regular training for construction personnel on work safety, public health safety, traffic safety, construction management, gender equality, and other relevant topics to enhance worker awareness and capabilities, ensuring the effective implementation of all management measures.</p> <p>7. Support Monitoring and Reporting: The Contractor shall cooperate with the Monitoring Entity and PMO in monitoring E&amp;S impacts, provide required data and reports, and promptly address and report any identified issues.</p> <p>8. Cooperate with Supervision and Management: The Contractor shall accept supervision and management from the PMO, EMA, Client, and relevant government departments, and actively cooperate with all inspections and corrective actions.</p> <p>These clauses may be incorporated into the bidding documents as ESMP implementation requirements to ensure clear contractor responsibilities, executable measures, and the minimization of E&amp;S impacts during construction.</p>
<p>Construction Company (CSC)      Supervision</p>	<p>Ensures sufficient funding and human resources; Supervises and instructs contractors on the appropriate and timely implementation of mitigation and monitoring measures in the Environmental and Social Management Plan;</p> <p>Oversees construction progress and quality;</p> <p>Appoints qualified occupational health and safety personnel for regular onsite supervision of contractors; monitors contractor performance in implementing the Environmental and Social Management Plan;</p> <p>Uses basic handheld instruments for simple and cost-effective onsite quantitative measurements;</p> <p>Regularly checks construction compliance with project environmental monitoring standards and targets, especially noise and air quality;</p> <p>Supports environmental and social monitoring reports.</p>
<p>Asian Infrastructure Investment Bank (AIIB)</p>	<p>Supervise project management and the timely execution of loan agreements and executing agencies;</p> <p>Disburses loan funds; reviews the terms of recruitment for environmental and social consultants and the regular monitoring reports;</p> <p>Reviews project compliance and objectives based on design and monitoring frameworks, Environmental and Social Impact Assessment reports, Environmental and Social Management Plans, and project management manuals;</p> <p>Approves updates to the Environmental and Social Management Plan as needed; supervises projects and conducts review tasks;</p> <p>Discloses environmental and social monitoring reports on the AIIB website.</p>
<p>Township/Street, Community/Village Committee</p>	<p>Township/Street: Participate in the investigation and confirmation of the ownership, land type, area, and other status of the affected land in the project, as well as the investigation and confirmation of the ownership, type, quantity, and other status of the attached objects and green seedlings on the ground; Participate in the formulation of resettlement pathways and site selection for farmers affected by land acquisition and demolition; Organize public participation to promote laws and policies related to land acquisition</p>

	<p>compensation, and resettlement; Approve and supervise the distribution and expenditure of land compensation funds for subordinate village committees; Coordinate the relationship between the project construction unit, affected villages/communities, and affected families, and resolve conflicts and issues during negotiations.</p> <p>Community/Village Committee: Participate in the investigation and confirmation of the ownership, land type, area, and other status of the affected land in the project, as well as the investigation and confirmation of the ownership, type, quantity, and other status of the attached objects and green seedlings on the ground; Organize village representative meetings or village meetings, According to relevant laws and regulations, propose specific social security personnel among the farmers whose land has been requisitioned, and report to the town government for filing; Organize public consultations and promote policies on land acquisition, demolition, compensation, and resettlement ; Participate in relevant resettlement work; Report the progress of resettlement implementation to the town government; Pay the compensation fees for collective land acquisition to farmers according to the compensation and resettlement plan, and post and publicize the income and expenditure status; Report the opinions and suggestions on land acquisition compensation and resettlement plans to relevant higher-level departments.</p>
--	---

## 8 Monitoring and Reporting

The PMO and PIU will document information related to stakeholder engagement, information disclosure, grievance submission and resolution, and will incorporate the implementation status of the Project's SEP into the ESMP Monitoring Report, which will be submitted to AIIB for review. In addition, internal monitoring reports will be prepared as part of the progress reports and submitted on a quarterly basis. During the project implementation period, quarterly external monitoring reports will be submitted in the first year. Upon AIIB's review and approval, semi-annual external monitoring reports will be submitted starting from the second year. Indicative indicators for stakeholder engagement and the corresponding responsible institutions are detailed in Table 8-1.

**Table 8-1 Indicators for Stakeholder Engagement Monitoring**

No.	Indicator	Unit	Frequency	Agencies responsible
1	Number of participation activities at the preparation stage	/	During the project implementation period, the internal monitoring reports will be prepared as a part of progress reports and submit quarterly; During the project implementation period, a quarterly external monitoring report will be submitted in the first year. After being evaluated and approved by the AIIB, a semiannual report will be submitted starting from the second year.	Qinzhou City and Qinbei District Development and Reform Bureau, PMO and PIU
2	Number of participation activities at the construction and/or operation stages	/		
3	Number of participants in public participation activities	/		
3.1	<i>Where: direct workers (by type of work, gender, etc.)</i>	/		
3.2	<i>Contracted workers (by type of work, gender, etc.)</i>	/		
3.3	<i>Community workers (by type of work, gender, etc.)</i>	/		
4	<i>Nearby community residents (including women, elders, and other vulnerable groups)</i>	/		
5	Number of feedback messages received	/		
6	Number of grievances received	/		

Stakeholder engagement activities will be disclosed to stakeholders based on the information disclosure strategy proposed in Chapter 5 above.

In the project lifecycle, the PMO and PIU will ensure that the grievance redress and

communication mechanisms operate effectively to communicate with stakeholders timely.

### **Appendix 1: AIIB Project Leadership Group**

According to the work needs of the China-ASEAN Sea-Rail Multimodal Logistics Project and the work requirements of the Asian Infrastructure Investment Bank, in order to smoothly promote the construction of the project. With the consent of the leading group, it was decided to adjust the members of the leading group for the project management of Asian infrastructure investment bank loans in Qinbei, and the list of members of the adjusted leading group is as follows:

**Leader:** Huang Liangxian, Standing Deputy Mayor of the District

Mi Kunren, Standing Committee of the District Party Committee, the United Front Work Department of the District Party Committee, Deputy District Mayor

Huang Yuqi, Deputy Mayor

**Member:** Ye Fengting, Deputy Director, Office of the District People's Government

Zhang Peng, Deputy Director of the Office of the People's Government of the District

Sun Mingjie, Deputy Director of the Office of the People's Government of the District and head of the major project task force

Zhou Qiuxia, Chairwoman of Women's Federation

Li Xingzhao, Director of Development and Reform Bureau

Yang Jia'an, Director of Civil Religion Bureau

Lin Bisheng, Director of Finance Bureau

Lin Mingxian, Director of Natural Resources Bureau

Zhang Hao, Director of Housing and Urban-Rural Development Bureau

Yang Dayong, Director of District Transportation Bureau

Li Hua Xian, Director of Water Resources Bureau

Song Zhencai, Director of Agriculture and Rural Development Bureau

Su Zhengdang, Director of District Emergency Management Bureau

Ma Xiangru, Director of District Audit Bureau

Zhou Wanfeng, Director of Market Supervision Bureau

Zeng Qingying, Party Secretary, Forestry Bureau

Zhong Xiuyu, Director of District Ecological Migration Development Center

Huang Yijing, Director of Investment Promotion Bureau

Su Meilong, Director of Management Committee of Economic Development

Zone of the District

Wu Da'an, Director of District Land and Housing Acquisition Centre

Zeng Jinjing, Chairman and General Manager, Huangma Assets Group, Inc.

Zhong Yuxia, Director of Qinbei Ecological Environment Bureau

Zhong Wenshi, Director of Changtian Street Office

Lai Xing, Secretary of the Party Committee of Dadong Township

The leading group set up an office, specifically responsible for coordinating and supervising the management of the project, as well as the daily work of the leading group. The office is located in the Qinbei District Development and Reform Bureau, the director of the office is appointed by Li Xingzhao, the deputy director is appointed by Chen Xianjian of the Qinbei District Development and Reform Bureau, Huang Zijuan of the Qinbei District Finance Bureau, and Su Kaiye of Huangma Assets Group Company, and the staff is drawn by the office from the members according to the needs of the work. Project management, finance and translation and other full-time staff, by the Huangma Assets Group Company.

If the members of the leading group need to be adjusted, involving the leading members of the Qinbei district people's government, the leading group office shall issue a document in the name of the leading group after reporting to the Qinbei district people's government for approval; if other members are involved, the office of the leading group shall issue a document on its own after reporting to the leading group for approval.

## Appendix 2: Public Participation Activities Carried Out

With the support and assistance of the Qinbei District PMO and Qinzhou Huangma Asset Management Group Co., Ltd., the E&S consultant conducted extensive stakeholder engagement activities for residents and relevant institutions in the project area from May 8, 2024 to May 20, 2024. The survey covered 8 communities/villages (Huangma Community, Chengbei Community, Longwan Community, Hengling Village, Jiangbiao Community, Dajing Community, Shantang Community, and Dadong Village) in 3 townships/streets (Changtian Street, Dadong Town, Hongting Street) in Qinbei District. The survey methods used in this study include focus group discussions, interviews with key informants, questionnaire surveys, on-site visits, and observations.

Widely solicited opinions from stakeholders in the project area to understand their concerns, needs, opinions, and suggestions; (1) A total of 225 people participated in the resettlement survey questionnaire, including 108 females, accounting for 48%, and 11 ethnic minorities (Zhuang), accounting for 4.9%; 20 low-income individuals, accounting for 8.9%. 2) A total of 380 people participated in the environmental and social impact assessment survey questionnaire, including 176 females, accounting for 46%, and 20 ethnic minorities (Zhuang), accounting for 5.3%; 42 low-income individuals, accounting for 11.05%. 3) A total of 45 key informants were interviewed, including responsible persons from institutions such as the Housing and Land Acquisition Center, Natural Resources Bureau, Human Resources and Social Security Bureau, Women's Federation, Civil Affairs Bureau, Ethnic and Religious Affairs Bureau, village (community) representatives, and responsible persons from related facility units. Relevant basic data and materials were collected. 4) A total of 16 focus group discussions were held, with about 240 participants, including about 84 women (35%) and 14 Zhuang individuals (6%).



**Figure 1 Special Meeting on Coordinating and Promoting Projects among Institutions at All Levels**

### (a) Field investigation

The consultant conducted on-site inspections of the project site selection and surrounding towns, communities/villages, and gained a more practical and objective understanding of the subproject

site selection and its impact on the production and life of surrounding residents, land acquisition and demolition, environmental impact, biodiversity impact, etc.



**Figure 2 Field investigation**

**(b) Focus group discussion**

In order to gain a more comprehensive understanding of the needs and suggestions of the project-affected people in the project area (including urban and rural residents, women, EMs, impoverished and other vulnerable groups), and in response to the evaluation of the current living environment by the project beneficiaries and the construction of the center park and the entrance trunk road, as well as their willingness, main concerns and demands for project construction, land acquisition and demolition, etc. The environmental and social consultant adopted a focus group discussion approach during the on-site investigation. The survey covers 8 communities/villages (Huangma Community, Chengbei Community, Longwan Community, Hengling Village, Jiangbiao Community, Dajing Community, Shantang Community, Dadong Village) in 3 townships/streets (Changtian Street, Dadong Town, Hongting Street) in Qinbei District. A total of 16 focus group discussions were conducted, with about 240 participants, including about 84 women (35%) and 14 Zhuang individuals (6%).



An institutional symposium was held at the Women's Federation to understand women's support policies and employment, as well as opinions and suggestions on projects



An institutional symposium was organized by the Qinbei District Human Resources and Social Security Bureau to understand the situation of social security payment, labor security, and employment skills training



**Figure 3 FOCUS GROUPS**

**(c) Interview with key informants**

The consultant conducted interviews with key informants in the towns, streets, villages/communities affected by the project to gain a more comprehensive understanding of stakeholders' attitudes towards the project and provide better recommendations for project design and implementation. And visited the responsible personnels of the Qinbei District Natural Resources Bureau, Land Acquisition Center, Women's Federation, Civil Affairs Bureau, Ethnic and Religious Affairs Bureau and other institutions in the project area, as well as the heads of related facility units, to collect relevant basic data and materials; And interviews were conducted with community/village committees and village representatives involved in the project. A total of 45 key informants were interviewed, including 15 females, accounting for 33%.



A meeting was held at Qinzhou Huangma Asset Management Group Co., Ltd. to coordinate and arrange institutional investigation work

Understood the social security situation in the project area at the Qinbei District Civil Affairs Bureau



Learned about the project policies and compensation and resettlement information at the Qinbei District Acquisition Center

Understood the ethnic minority population and other situations in the project area at the Qinbei District Ethnic Bureau

### 1. Interviews with relevant government agencies



### 2. Basic information was collected from the village/community (residential) committee



**3. Interview with residents in the project area**



Guangtou gas station



Hexi Sewage Treatment Plant



Mahuang Water Supply Plant



Mahuang Marshalling Yard



Hainuoer Urban Household Waste Incineration Plant



Linhu converting station

#### 4. Existing facilities social survey

**Figure 4 Interview with key informants**

##### (d) Questionnaire investigation

After holding a unit symposium with relevant institutions in the project county, the social evaluation team conducted a social evaluation questionnaire survey in towns, communities/village groups, and street shops affected by the project construction.

The survey scope of the social evaluation team covers 8 communities/villages (Huangma Community, Chengbei Community, Longwan Community, Hengling Village, Jiangbiao Community, Dajing Community, Shantang Community, Dadong Village) in 3 townships/streets (Changtian Street, Dadong Town, Hongting Street) in Qinbei District. 400 social impact assessment survey questionnaires were distributed, and a total of 380<sup>4</sup> social impact assessment survey questionnaires were collected, accounting for 95% of the effective rate. Among them, 176 were female, accounting for 46%; 20 ethnic minorities (Zhuang), accounting for 5.3%; 42 low-income individuals, accounting for 11.05%.

<sup>4</sup> Among a total of 380 valid questionnaires, 193 were completed by residents directly affected by LA and HD, accounting for 51% of the total. The remaining 187 questionnaires were from non-LA-and-HD residents within the project impact area, representing 49%.



**Figure 5 Questionnaire Investigation Site**

The specific situation of stakeholder participation activities carried out by the social evaluation team is shown in Table 1.

**Table 1 Stakeholder Participation Activities Conducted by the Social Evaluation Team**

Investigation time	Investigation methods	Participants	Number of participants	Among them, the number of women	Among them, ethnic minorities	Among them, low-income individuals
May 8-20, 2024	Key informant interview (KII)	Officials and village (residential) representatives from the Housing and Land Acquisition Center, Natural Resources Bureau, Human Resources and Social Security Bureau, Women's Federation, Civil Affairs Bureau, Ethnic and Religious Affairs Bureau, relevant town and village institutions, and related facility units	45	15	—	—
	Focus Group Discussion (FGD)	Stakeholders from 6 communities/villages in Changtian Street and Dadong Town within the project's scope, including those affected by land acquisition and demolition, residents of the project area, PMO staff, and relevant government agency staff	240 (16)	84	14	21
	Resettlement Questionnaire Survey	Land acquisition and demolition households directly affected by the project	225	108	11	11
	Social evaluation questionnaire survey	Stakeholders from 6 communities/villages in Changtian Street and Dadong Town within the project's scope	380	176	20	42
<b>Total</b>			<b>890</b>	<b>383</b>	<b>45</b>	<b>74</b>

Data source: Social Evaluation Group Survey (May 2024)

After completing the field survey, the environmental and social consultant continued to carry out follow-up assessment and public participation activities, and fully communicated and confirmed with the project client on risk mitigation measures, program optimization and action implementation timeline to further improve social impact assessment and management measures. Including: holding an online meeting in October 2024 to discuss the relocation of the Tudimiao in Hengling Village; Organize meetings in March-April 2025 to exchange land acquisition compensation, assistance to vulnerable groups and social security measures; In July 2025, an online meeting was organized with the PMO and the Qinbei District Housing and Land Acquisition Center to verify the scope of influence and physical quantity of the project area, and discussed and supplemented the details of the report, including the physical quantity, land indicators, compensation standards, resettlement plan and implementation plan, and details of the report. Held an online meeting on September 15-16, 2025, to conduct due diligence on occupational health and employment management with potential local photovoltaic companies and construction companies; On September 23, 2025, the AIIB expert group, together with the PMO, the environmental and social team and representatives of local governments, conducted an on-site inspection, during which they interviewed villagers who may be affected by railway noise and vibration, investigated the current situation of the Tudimiao temple in Hengling Village and the relocation of the new site, as well as the current situation of the resettlement community, and discussed the resettlement plan and the construction of the resettlement community and the relocation of the Tudimiao temple. In November 2025, the Environmental and Social Consultant updated the Environmental and Social Impact Assessment Report, Environmental and Social Management Plan, Stakeholder Engagement Plan, Gender Action Plan and Resettlement Plan based on the updated Feasibility Study Report (31 October 2025).

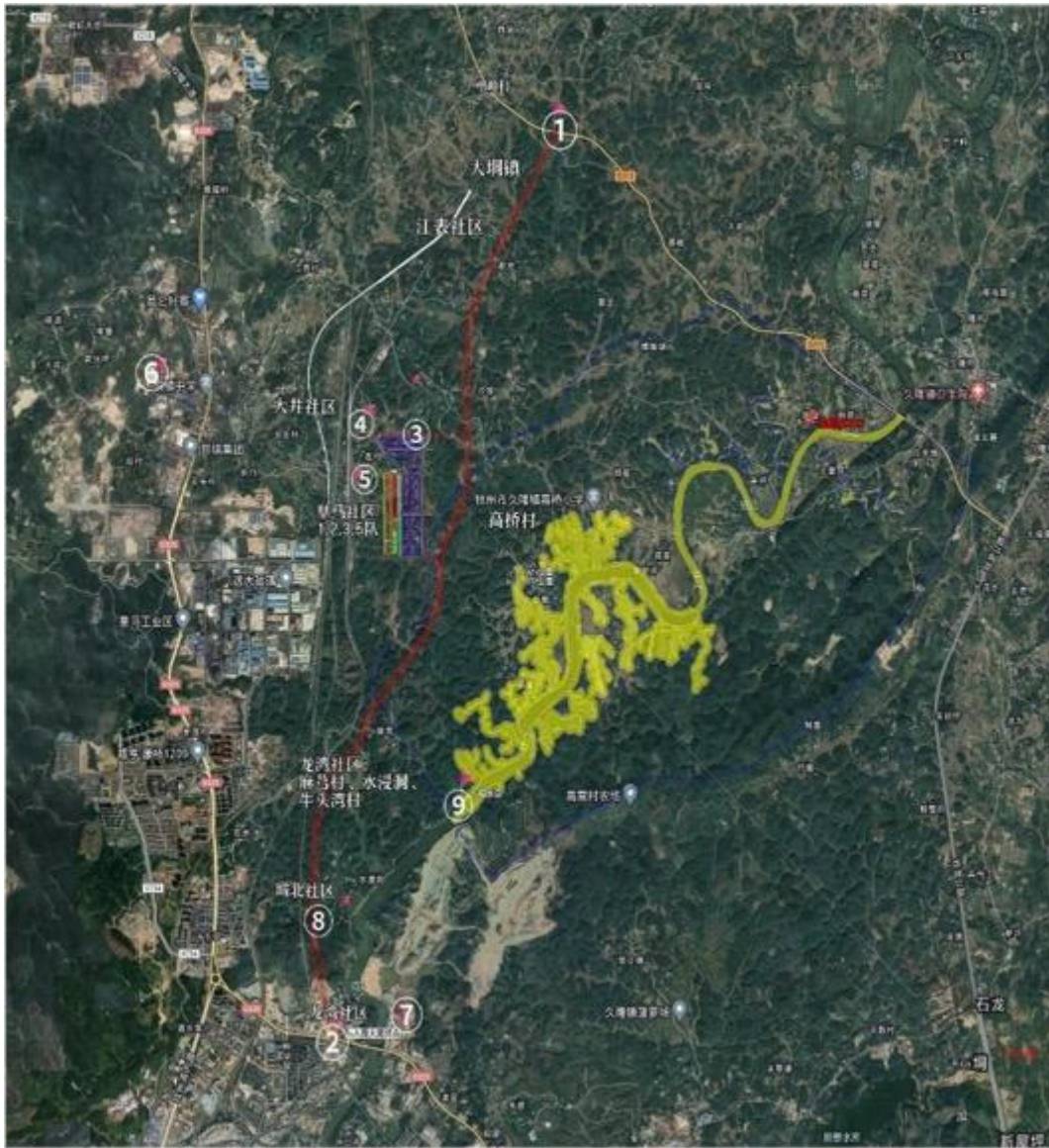


Figure 1 The geographical location of the affected streets and villages

**Table 2 Discovery and Results of Public Participation Activities Conducted by the E&S Consultant**

Stakeholder	Investigation time	Location	Number of participants/ female	Investigation method	Main Content	Discovery and Results
Affected village/community secretaries, officials, village group leaders, and residents	May 8-10, 2024	Huangma Community	148/60	Questionnaire survey, interviews with key informants, and discussion meetings	<p>1. Understand the basic situation of the project villages/communities, including baseline data such as demographic structure, economic conditions, social services, and the distribution, socioeconomic characteristics, and cultural conditions of ethnic minorities.</p> <p>2. Understand residents' perceptions, attitudes, and expectations towards the project; Especially the awareness and attitudes of women and low-income groups, exploring their special needs and challenges in the project.</p> <p>3. Collected residents' concerns, potential issues, and improvement suggestions regarding the project, including land acquisition and demolition, environmental and social risks, employment, and other aspects.</p>	<ul style="list-style-type: none"> <li>- Residents (including Zhuang residents) have a high level of support for the project and believe that it will bring opportunities for local development;</li> <li>- Women and low-income groups have a strong willingness to participate, hoping to improve their living conditions and increase income opportunities through projects.</li> <li>- On the premise of confirming the legality of compensation standards and timely payment of compensation fees, residents generally agree that the project will occupy part of their land or carry out house demolition.</li> <li>- The surveyed residents have a certain understanding of how to appeal and complain, indicating that the information dissemination channels within the community are relatively smooth.</li> <li>- Residents generally hope that the project party can increase its publicity efforts and regularly convene residents' meetings to better listen to and absorb their opinions and suggestions.</li> <li>- For farmers who have lost their land after land acquisition, it is hoped that livelihood restoration measures can be provided, such as employment training, purchasing Pension Insurance for Land-Lost Farmers, etc., to ensure that their basic livelihood is not affected,</li> <li>- Residents hope that local migrant workers can be given priority in the project construction process to promote local employment and economic development.</li> </ul>
	May 10, 2024	Dajin Community	30/12			
	May 11-12, 2024	Hengling Village	112/46			
	May 13-14, 2024	Jiangbiao Community	94/39			
	May 14, 2024	Dadong Village	30/14			
	May 15-16, 2024	Longwan Community	87/35			
	May 17, 2024	Shangtang Community	25/10			
	May 18-19, 2024	Chengbei Community	55/26			

						<ul style="list-style-type: none"> <li>- Considering that construction may cause damage to rural roads and other infrastructure, residents demand timely restoration after the completion of construction to ensure that the daily travel of villagers is not affected.</li> <li>- Noise, vibrations and dust pollution are common concerns among residents, which have a significant impact on the surrounding environment and residents' quality of life. It is hoped that mitigation measures can be taken;</li> <li>- The project party has taken a series of environmental and social mitigation measures, such as route selection and avoidance, setting up sound barriers, sprinkling water to reduce dust, meeting wastewater treatment standards for discharge, installing soundproof windows for villagers and ecological restoration. They have also developed social and environmental management plans, resettlement plans, stakeholder participation plans, etc., to minimize environmental and social impacts.</li> </ul>
Qinbei District PMO, project executing agencies, relevant government agencies at all levels, townships and streets	May 8, 2024	Huangma company	29/11	Seminar	The PMO, executing agency, and relevant governments at all levels discuss the feasibility study report of the project and the requirements of the AIB's environmental and social documents	<ul style="list-style-type: none"> <li>- Carry out environmental and social document preparation work through coordination and communication;</li> </ul>
	May 15, 2024	Huangma company	15/3	Seminar	Investigation and Exploration of Discoveries in the Process of Environmental and Social Assessment Work	<ul style="list-style-type: none"> <li>- Through social surveys, it has been discovered that deficiencies in project design need to be addressed and improved</li> </ul>
	May 16, 2024	Huangma company	7/4	Coordination meeting	Coordinate the investigation arrangements of relevant government agencies;	<ul style="list-style-type: none"> <li>- Smoothly conduct stakeholder surveys for various interests.</li> </ul>

	May 8, 2024	Qinbei District Natural Resources Bureau	1/1	Seminar and Promotion Meeting	<p>1. Confirm whether the project land complies with the latest national spatial planning and overall land use planning, ensuring that the land use is legal and compliant;</p> <p>2. Coordinate the acquisition of land expropriation and specific land type information, such as agricultural land, construction land, unused land, etc., in order to develop reasonable land expropriation and compensation plans;</p> <p>3. Detailed understanding of whether the project construction scope involves sensitive areas such as ecological protection red lines and permanent basic farmland, to ensure that the project does not have adverse effects on these areas;</p> <p>4. Understand and master the specific content and standards of the current land acquisition compensation policy, as well as the relevant fees that need to be paid during the land approval process, to ensure the smooth progress of land acquisition work;</p>	<p>The District Natural Resources Bureau has put forward opinions and suggestions on strengthening ecological protection, optimizing land layout, and improving land acquisition compensation mechanisms for the project. Specifically, it includes the following aspects:</p> <ul style="list-style-type: none"> <li>- The project executing agency should improve the preliminary land use procedures as soon as possible in accordance with the requirements of the new Land Management Law, ensure the legality and compliance of the project land use, strengthen communication and coordination with the Natural Resources Bureau, and promptly solve problems encountered in the land approval process.</li> <li>- The project executing agency should attach importance to the early information disclosure and public participation work, and promote project information, land acquisition compensation policies, etc. to the affected population through various forms; Grassroots organizations such as townships/streets, villages/communities should do a good job in organizational coordination, actively negotiate and communicate with affected populations, solve their reasonable demands and concerns, and avoid possible land acquisition conflicts as much as possible;</li> <li>- Project design and planning should fully consider the requirements for protecting the ecological environment and take effective measures to reduce the impact on the ecological environment. Strengthen environmental and social monitoring and evaluation work to ensure ecological and environmental safety during project construction and operation.</li> </ul>
--	-------------	--	-----	-------------------------------	--	---

					5. Collect professional opinions and suggestions on project construction for optimization and adjustment during project design, planning, and implementation.	
	May 8, 2024	Health commission	1/0	Seminar and Promotion Meeting	Understand opinions and suggestions on project implementation.	<ul style="list-style-type: none"> <li>- It is necessary to fully understand the potential impact of the project on public safety and health during the construction and operation process, including the risk of infectious disease transmission, environmental pollution risks, etc;</li> <li>- Provide necessary health protection measures for project participants, such as setting up medical points, equipping necessary medical equipment and drugs, etc., to cope with sudden illnesses or accidental injuries, and should also have corresponding emergency rescue capabilities;</li> <li>- During the implementation of the project, actively communicate and collaborate with the community organizations of the Health Commission and other departments, carry out health education and publicity work in the construction camp and surrounding villages/communities, ensure the transparency of project information and public participation, improve residents' health awareness and self-protection ability, and jointly promote the smooth implementation and sustainable development of the project.</li> </ul>
	May 16, 2024	Qinbei District Ethnic and Religious Affairs Bureau	2/1	Interview	Understand the basic situation of ethnic minority population, customs and culture in the project area; Understand opinions and suggestions on project construction.	<ul style="list-style-type: none"> <li>- The project impact area covers five villages/communities (Huangma, Longwan, Chengbei, Jiangbiao, Hengling) under Changtian Sub-district and Dadong Town, all located in Qinzhou's urban-rural fringe. There are no ethnic minority compact communities in the project area; all are Han villages. Approximately 60 ethnic minority residents (all Zhuang) account for 0.05% of the total population. These are scattered households formed primarily through intermarriage or migration. All scattered Zhuang residents can communicate in Putonghua and</li> </ul>

						<p>enjoy the same public services, social welfare benefits, legal rights, and protections as Han residents, with no differences.</p> <ul style="list-style-type: none"> <li>- Provide appropriate employment opportunities for ethnic minorities to increase their income. Furthermore, it is recommended to fully respect ethnic minority cultural customs during construction, such as reasonably scheduling or suspending work during traditional festivals like "Sanyuesan", demonstrating respect for and inclusion of local culture.</li> </ul>
	May 16, 2024	Collection Center	2/0	Interview	<p>Understand the number of households affected by land acquisition and demolition within the scope of project construction; Understand project expropriation compensation policies and resettlement plans, etc;</p> <p>Understand the difficulties and problems encountered in the current collection work;</p> <p>Understand opinions and suggestions on project construction, etc;</p>	<ul style="list-style-type: none"> <li>- The project unit attaches great importance to information disclosure and public participation in the early stage, and tries to avoid possible collection conflicts as much as possible;</li> <li>- Organize land acquisition and livelihood restoration in accordance with the environmental and social framework policies of the Asian Infrastructure Investment Bank, as well as the requirements of the ESS2 social standard, resettlement plan, and stakeholder engagement plan;</li> <li>- Organize and coordinate the consultation of affected individuals in townships/streets, villages/communities.</li> <li>- The project design and planning are reasonable, and efforts are made to protect the ecological environment.</li> </ul>
	May 16, 2024	Women's Federation	10/6	Forum	<p>Understand the current composition of the Women's Federation; Current policy support activities provided; Discussion on possible impacts of project construction; Opinions and suggestions on the project.</p>	<ul style="list-style-type: none"> <li>- Protecting women's rights during project construction and operation;</li> <li>- Provide flexible employment opportunities for women;</li> <li>- Enhance women's participation in project design, consultation, negotiation, employment skills training, safety awareness promotion, and other aspects</li> </ul>
	May 16, 2024	Human	4/2	Forum	Understand opinions and	<ul style="list-style-type: none"> <li>- Through project implementation, local employment</li> </ul>

		Resources and Social Security Bureau			suggestions on project construction.	<p>will be stimulated, more job opportunities and positions will be created, and employment pressure will be alleviated. Based on project needs, the required types and quantities of talents will be clearly listed, and project workers will be encouraged to recruit. Priority will be given to local labor, especially those affected by land acquisition and demolition, low-income and unemployed individuals, in order to promote local employment. And collaborate to provide employment guidance and training, promoting workers to achieve employment;</p> <ul style="list-style-type: none"> <li>- It is necessary to establish a sound labor management system for project construction, including basic guarantees such as signing labor contracts, paying wages, arranging working hours, and purchasing work-related injury and accident insurance, caring for employees' occupational health and construction safety, and ensuring harmonious and stable labor relations.</li> <li>- Comply with labor regulations, establish an appeal mechanism, do a good job in supervision, and prevent labor disputes and illegal employment behavior.</li> </ul>
	May 16, 2024	Civil Affairs Bureau	1/1	Interview	Current basic situation of low-income population; Assistance measures taken for low-income groups; Opinions and suggestions on the project.	<ul style="list-style-type: none"> <li>- -Encourage vulnerable groups to participate in negotiations, employment, and other aspects of the project at all stages, provide care and support to vulnerable groups, participate in the project and benefit from it.</li> </ul>
Existing facility units	May 16, 2024	Huangma Water Supply Plant	1/0	Interview	Conduct social due diligence on existing facilities to understand their basic situation, including:	<ul style="list-style-type: none"> <li>- At present, these existing facilities are in stable operation and have good processing capabilities. However, with development, there may be issues such as equipment aging that affect processing capabilities and efficiency; At the same time, due to the integration of the project, it may approach or reach the design limit, and may face the challenge of insufficient processing capacity in the later stage.</li> </ul>
	May 16, 2024	Linhu converting station	—	Data collection	1. The current status of facility operation, including the operational status of the facility, including	

	May 15, 2024	Garbage transfer station	—	Data collection	service life, processing capacity, maintenance, etc;	<p>- The land of existing facilities units was acquired early, through allocation and transfer, and the relevant procedures were relatively complete. This part of the land used to have land acquisition and demolition (not within the past 5 years), but the land acquisition, demolition and resettlement work has been properly resolved, and there are no historical legacy issues. Overall, both the facility management and surrounding residents generally support the project construction. The existing facility management believes that after the completion of the project, it will face new problems and challenges in terms of sewage access, gas supply, and the scale of operation and treatment of these existing facilities. It is hoped that in the implementation, communication and coordination can be strengthened, project design can be improved, and problems and difficulties that arise during the access process can be jointly solved to ensure the smooth implementation of the project.</p> <p>- In terms of environmental impact, it is necessary to strictly comply with environmental and social policy requirements. Corresponding measures should be taken to reduce the impact on the surrounding environment and groundwater caused by noise, odor, and other impacts during construction and operation.</p> <p>- Existing facilities have established public participation mechanisms, such as setting up suggestion boxes and holding public consultation meetings, but the channels and effectiveness of participation need to be further improved and enhanced. There are some appeal records, mainly focusing on noise and odor pollution. Corresponding measures have been taken to mitigate the impact, but management and supervision still need to be strengthened in the future, and public complaints need to be responded to and handled in a timely manner.</p> <p>- Regarding the staffing of institutional facilities, there is currently a sufficient number of personnel, but there are differences in individual professional skills and training. As the workload increases, new employees will be recruited, and employee training and management still need to be</p>
	May 16, 2024	Guangtou Gas Station	1/0	Interview	2. Land situation, including land occupation area, time and method of land acquisition, processing time of relevant procedures, and inquiries about whether there are any historical issues left over from land acquisition and relocation;	
	May 17, 2024	Huangma Sewage Treatment Plant	2/1	Interview	3. Discuss the impact of project construction on them, as well as their opinions and suggestions on project construction;	
	May 17, 2024	Hainuoer Landfill Site for Domestic Waste	2/1	Interview	4. Understand the impact of existing facility operation on the surrounding area, including noise, odor, solid waste pollution, etc;	
	May 17, 2024	Huangma marshalling yard	1/1	Interview	5. Understand the public participation methods and complaint records of existing facilities during operation; 6. Understand personnel allocation, gender composition, etc;	

						<p>strengthened to improve professional skills and service levels. There are relatively few female members, mostly accounting for around 15-20%, mainly responsible for light physical work such as administration, finance, logistics, etc. No obvious gender discrimination has been found.</p> <p>- After the project is connected to existing facilities, continuous monitoring and evaluation of the operational status and treatment effectiveness of the facilities are carried out to ensure their stable operation and effective implementation of environmental and social management measures.</p>
--	--	--	--	--	--	---

Data source: Environmental and Social Consultant and the Investigation Team (May 2024)

**Project Resettlement Public Participation Activities (Continuation Sheet)**

Public Participation Date	Method	Participants	Discussion Topics
October 2024	Online Meeting	Qinbei District Land and Housing Acquisition Center, Qinzhou Huangma Asset Management Group Co., Ltd., Dadong Town, representatives of Hengling Village villagers, RP preparation team	Relocation of a simple Tudimiao in Hengling Village affected during the construction of the project's entrance trunk road.
March-April 2025	Online Meeting	Stakeholders from 6 communities/villages in Changtian Sub-district and Dadong Town within the project area, including persons affected by land acquisition and demolition, residents of the project area, PMO, relevant government agency staff, RP preparation team	Pre-LA discussion meeting, covering topics such as land parcel division, land acquisition scope, resettlement budget, social security measures for land-expropriated farmers; compensation standards for above-ground attachments and young crops; methods for determining TLO compensation standards; support policies for vulnerable groups, etc.
July 2025	Online Meeting	Qinbei District Land and Housing Acquisition Center, Qinzhou Huangma Asset Management Group Co., Ltd., Changtian Sub-district, Dadong Town, Environment and Social Team	The feasibility study unit updated the Feasibility Study Report. The RP preparation survey team verified the project's impact scope and physical assets within the project area with the PMO and Qinbei District Acquisition Center via online meeting, and discussed and made supplementary revisions to the report's physical assets, land quotas, compensation standards, resettlement schemes, implementation plans, and detailed aspects.
September 15-16, 2025	Online Meeting	Qinzhou Huangma Asset Management Group Co., Ltd., photovoltaic enterprises, construction enterprises, Resettlement and Social Team	Discussion and understanding of relevant information about photovoltaic enterprises and construction enterprises in Qinzhou City, including occupational health and safety, and employment issues.
September 23,	On-site	AIB experts, Qinbei District Land and Housing Acquisition	On-site survey of the Tudimiao situation in Hengling Village and

Public Participation Date	Method	Participants	Discussion Topics
2025	Due Diligence	Center, Qinzhou Huangma Asset Management Group Co., Ltd., Dadong Town, representatives of Hengling Village villagers, RP preparation team	discussion of subsequent relocation issues; discussed social security measures for land-expropriated farmers; compensation standards for above-ground attachments and young crops; methods for determining temporary land occupation compensation standards; support policies for vulnerable groups, etc.

Data source: E&S investigation team (updated in October 2025)

### Appendix 3: Interview Records

#### **Institutional Forum 1:** Women's Federation Joint Committee

**Meeting Date:** May 16, 2024

**Meeting Location:** Conference Room, Qinbei District Women's Federation

**Attendees:** PMO, Social Consultation Team, Women's Federation Staff (13 participants)

**Discussion Topics:**

First, the social consulting expert introduced the project content and the Asian Infrastructure Investment Bank's (AIIB) requirements regarding gender equality. The expert also inquired about the current support activities of the



Women's Federation, seeking opinions and suggestions from a gender perspective on aspects such as project construction and employment opportunities.

The chairperson of the Women's Federation stated that currently, 100% of the leadership teams in villages and communities in Qinbei District include female cadres, and 100% of the Women's Federation chairpersons are part of the village/community leadership teams. This signifies that women are playing an increasingly important role in grassroots governance, bringing more diverse perspectives and voices to the decision-making process. Additionally, through projects like the "Leading Role (Model Women Representatives)" training, not only have women's personal abilities and overall qualities been enhanced, but it has also established role models for

them in the community, inspiring more women to engage in public affairs.

Economic support activities include: Microloan Benefits: Offering preferential microloan policies for women, such as interest-free or subsidized loans, effectively alleviates the financial pressure they face when starting or expanding their businesses, thereby promoting women's economic independence and self-development.

Support for Rural Industries: Through activities such as policy explanations and recognition programs, women are encouraged and supported to participate in the development of rural industries. This not only promotes the diversification of the local economy but also enhances women's economic status and social influence.

Technology Demonstration Base: Establishing technology demonstration bases provides women with technical training and support for purchasing feed and other resources. This initiative helps improve their production skills and product quality, enhancing their market competitiveness.

Regarding women's vocational skills training and employment promotion, we will regularly conduct awareness campaigns and vocational skills training using a combination of online and offline methods. This approach broadens employment channels for women and enhances their competitiveness in the job market. Notably, the establishment of the online platform "Qinbei Release" provides women with more convenient learning opportunities. Currently, we have a professional teaching staff of 15 people, conducting approximately 150 lectures every six months on topics such as service rights protection, traffic education, and employment, with a total participation of 200-300 people. This initiative not only improves women's vocational skills but also boosts their confidence in seeking employment.

Regarding women's health protection, measures have been implemented such as conducting screenings for cervical and breast cancers, purchasing health insurance, and providing vaccinations. These initiatives offer essential health safeguards for women and reduce their risk of falling into poverty due to illness. Additionally, awareness campaigns and training activities on topics such as HIV, sexual harassment, and sexual exploitation have been organized to enhance women's health awareness and self-protection capabilities. Through regular follow-ups and care activities, we can timely assess women's health status and needs, providing them with necessary assistance and support.

Suggestions for the project include providing women with flexible work hours for certain positions, ensuring that the work environment meets environmental standards, and taking into account women's physical needs. Additionally, organizing family care activities could help promote family harmony.

#### **Institutional Seminar 2:** Seminar Meeting at the Qinbei District Human Resources and Social Security Bureau

**Meeting Date:** May 16, 2024

**Meeting Venue:** Conference Room of the Qinbei District Human Resources and Social Security Bureau

**Participants:** PMO, Social Consulting Team, Social Security Center of the Human Resources and Social Security Bureau, Labor Inspection Team, Employment Training Staff

**Discussion**

**Topics:**

First, social consulting experts introduced the project content and the Asian Infrastructure Investment Bank's



(AIIB) requirements regarding gender equality. They also inquired about opinions and suggestions related to labor protection.

The main discussion topics and content included:

1. **Three-level Safety Education:** The construction unit is required to conduct safety education at three levels: company-level, project department-level, and team-level, to enhance workers' safety awareness.

2. **Social Insurance Contributions:** The project must pay for work injury insurance according to local regulations, ensuring that workers receive timely medical treatment and financial compensation in case of work-related injuries.

3. **Funding Security and Payment:** The construction unit must meet funding security requirements, ensuring that project payment

guarantees are issued monthly for wages, while also being subject to supervision by relevant departments to prevent wage arrears.

4. **Accident Rescue and Accountability:** In the event of an accident, a rescue mechanism should be activated immediately to minimize losses and injuries. The responsible parties for the accident should be held accountable according to the law and regulations to ensure fairness and justice. Procedures for requesting rescue or determining liability must be completed within the specified timeframe (e.g., 30 days) to avoid complicating the issues.

5. **Employment Services:** Provide unemployed individuals with employment guidance, vocational training, and job referral services to assist them in successfully re-entering the workforce or transitioning to new careers.

All industries and units should strictly implement relevant policies and regulations, enhance internal management, and ensure that various measures are effectively executed, creating a safer, fairer, and more secure working environment for workers, protecting their rights, and promoting social harmony and stability.

#### Interview Case 1:

The Resettlement and Social Work Group organized a symposium in Huangma Community, Qinbei District, with Group 1, Group 2, Group 3, and Group 5 village representatives participating. The attending representatives expressed support for the construction of the project and put forward the following opinions and suggestions on land acquisition and demolition compensation, resettlement, and construction impact:

##### 1. Land acquisition and demolition compensation

###### (1) Compensation standards for cultivated land

The public raised questions about the compensation standards for land expropriation of different projects in the area, so the staff introduced the latest land compensation policy to the villagers and answered their doubts. Staff explained that all expropriated land is compensated according to the district land price, and the villagers expressed their understanding.

###### (2) Housing Demolition and RP

For those who can be resettled on site after house demolition, the public agrees with the RP; For those who need to be resettled in other places, the vast majority of people say that it will not have a significant impact on their livelihoods. Some are also reluctant to leave their familiar neighbors.

###### (3) Compensation standards for housing demolition

Some project-affected people believe that the compensation standards for housing demolition are too low and feel that rebuilding new houses requires them to pay out of their own pockets, hoping to increase compensation. These are mainly due to their insufficient understanding of the methods for evaluating the value of houses, and their failure to consider decoration and new/old issues. After the explanation from the working group, the public expressed acceptance.

##### 2. Reduce the impact of construction

(1) Hope to avoid farmland in a reasonable way, occupy less farmland, and facilitate the cultivation of both sides.

(2) Attention should be paid to drainage design in low-lying areas and flood discharge channels that are prone to waterlogging.

(3) Damage to fields, roads, water channels, and irrigation facilities during construction should be promptly repaired.

(4) During the farming season, temporary measures should be taken to ensure the smoothness of the plowing path.

### 3. Employment and income

(1) Recruit local laborers during project implementation.

(2) The construction team should try to choose local grains, vegetables, and catering services when purchasing daily necessities.

(3) The construction unit should try to rent vacant local houses as production and living spaces as much as possible.

(4) Some individuals have reported that there is not much land left after land acquisition, and they need new sources of livelihood while also taking care of their children and elderly. They hope to find suitable jobs nearby.



### Interview Case 2:

The resettlement and social work group organized a symposium in Hengling Village and Jiangbiao Community, Dadong Town, Qinbei District. The participants included village representatives from Hengling Village and Jiangbiao Community. The attending representatives expressed support for the construction of the project and put forward the following opinions and suggestions on land acquisition and demolition compensation, resettlement, and reducing construction impact:

- (1) When constructing the entrance trunk road to the park, it is necessary to do a good job in drainage design;
- (2) Agricultural access roads need to be well maintained, and if rural transportation roads are damaged during the project implementation, they need to be repaired in a timely manner;
- (3) The construction of the entrance trunk road passes through a Tudimiao in Group 12 of Hengling Village. It is hoped that the implementing agency can consider adjusting the route.
- (4) Some villagers hope that in the future, temporary employment and other job opportunities for the project will prioritize the villagers who have been requisitioned.
- (5) they hope to receive

some skill training.

